

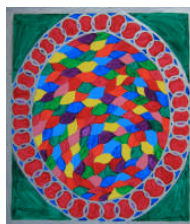
Department of Human Services

Post School Resource Guide 2014

Inner and Outer Eastern Melbourne
East Division



Cover art by Aurora Gill – “Jewelled Mosaic”



Updated March 2014

Contents

About this Guide	4
Post-School Transition Support	5
What are some of the options and what support can they provide?	5
Factors to consider when visiting a service	10
Summary of Services in the Eastern Suburbs	11
Employment Services: Disability Employment Service Providers	14
Employment Services: Australian Disability Enterprises	17
TAFEs	22
Transition to Employment Providers	24
Prevocational Program Providers	27
Disability Service Providers: Day Services and Individualised Programs	35
Council Services	59
Other Services	63
Other Supports	67
Notes	71

About this Guide

Many young people have benefited from support provided by specialist disability support services to transition from school to adult life. This guide talks about the various options available for young people who may benefit from post school support services.

This guide has been compiled by the Department of Human Services, East Division, from information provided by service providers primarily in the eastern suburbs of Melbourne. It provides information to assist young people and their support networks to explore post school options. A range of organisations including specialist disability employment support services, prevocational training providers and providers of community based day activities have provided the information about their service. This is a useful resource for parents, school staff and anyone supporting students through the transition from school.

Exploring Post School Options can be confusing. It can help to consider the following when exploring the options:

- What interests the person?
- What does the young person want for the future, whether from a job or other program?
- What is available and where it is offered?
- Finding the best people to talk to about your choices
- Asking lots of questions
- Visiting service providers
- Participating in work experience opportunities

This guide should be used in conjunction with transition planning carried out by schools, Department of Human Services Transition Planners, the young person and their family. This guide is complementary to other resources such as the Eastern Recreation Leisure Service Guide, the Eastern Region Respite Resource Guide and any available information from the services listed. It is not intended to provide comprehensive information relating to service providers, but rather initial contact and a brief overview of the services.

As indicated in the Contents Section, this guide is compiled by the type of support a service provides. Information about the different service types is provided on pages 5 to 9. Contact details and some information about each service are included in this guide. At the end of this guide there is information about the Federal Government Department of Human Services (previously Centrelink), respite services and other community supports.

While this guide primarily focuses on vocational service providers in the eastern suburbs, additional information is available about other services from the Transition Planning Team. If you have further queries you can contact the Transition Planning Team on 9843 6337 or via e-mail at transitionplanning@dhs.vic.gov.au

Post School Transition Support

Planning for life after school

The transition from school to adult life presents young people with a wide range of options including further education, employment, vocational training, and volunteering and community programs.

Planning for life after school should start as early as possible to ensure that you have sufficient time to explore and consider the options available to you.

Planning should be directed by you to the extent of your ability and involve talking to teachers and career advisors about the different sorts of things you may like to try when you leave school.

Post School Transition Support

The funded Post School Transition Support available through the Department of Human Services includes:

Futures for Young Adults

Post School funded support is available through the Futures for Young Adults Program (FFYA). FFYA is funding provided by the Department of Human Services to support young people to access further education, training, employment or other vocational programs. FFYA funding and support is provided for up to three years from when a young person leaves school up until they turn 21 years old.

Transition to Employment

Transition to Employment (TTE) is funding and support specifically for young people who want to gain employment and need support to develop the skills to obtain a job, or receive help from an Australian Government Employment Program.

Further information about FFYA and TTE is available in the Post School Transition Support Information Sheet.

Eligibility for Post School Transition Support

You may be able to receive funded Post School Transition Support if you:

- are aged 18-21 years
- are a permanent resident of Victoria
- are leaving school in 2014
- have a disability as defined by the Disability Act 2006

Exceptions may be made for people who successfully complete their Victorian Certificate of Education (VCE) or Victorian Certificate of Applied Learning (VCAL) and leave school before turning 18 years.

What are some of the options and what support can they provide?

Employment Services, Job training and Volunteering

My Future

My Future is an online resource that can assist people to explore the occupations that best suit them and their career path. For more information and links to the tools available please see the My Future website at www.myfuture.edu.au.

Job Services Australia

Job Services Australia is an Australian Government funded service that enables all job seekers to find tailored employment that will meet their needs.

Jobseekers under the age of 21 years, regardless of whether they are receiving Centrelink payments, can be eligible for a range of services.

For more information regarding the services offered by Job Services Australia and the services offered by them please see the Australian JobSearch website at www.jobsearch.gov.au.

Disability Employment Services

Disability Employment Services (DES) provides specialist help for people with disability, injury or health condition who require support to find and maintain sustainable employment in the open labour market.

DES provides a range of services to jobseekers including:

- Specific job skills training, job search skills, resume preparation and interview preparation.
- Assistance in locating employment opportunities.
- Supporting people to successfully gain employment.
- Access to traineeships, pre-apprenticeship and apprenticeship programs.
- On the job support, including training in the job and co-worker and employer supports, decreasing support once the person becomes more established in their role.
- Assistance to an employer, such as work place modifications.
- Purchase of vocational training and other employment related assistance.
- Careers counselling.

A full list of Disability Employment Services within Victoria is available online at <http://disabilityemployment.org.au/provider-search/vic/>

Australian Disability Enterprise (previously known as Supported Employment)

Australian Disability Enterprises (ADE) provides ongoing supported employment in businesses operated by the support provider organisation. ADEs are commercial businesses that provide employment for people who have a disability who need substantial ongoing support to maintain their employment. ADE enable people with a disability to gain skills and engage in a variety of work tasks such as packaging, assembly, production, recycling, plant nursery, garden maintenance, cleaning services, laundry services and food services.

Employees of an ADE enjoy the same working conditions as those in the general workforce. ADE are prepared and equipped to employ people with a low level of productivity and allow them to work at their own capacity under a productivity based wages system.

A full list of Australian Disability Enterprises is available online at www.australiandisabilityenterprises.com.au

Transition to Employment Services

Transition to Employment (TTE) is funding and support specifically for young people who want to gain employment and need support to develop the skills to obtain a job, or receive help from an Australian Government Employment Program.

TTE services focus on supporting young people to enter the workforce through the development of skills and confidence which will assist young people to participate in the community more independently.

TTE services can support young people with things like:

- Assisting young people to plan and set employment related goals
- Identifying work skills and any areas where the young person needs further training
- Arranging and supporting young people to participate in work placements
- Providing or arranging on-the-job training and support
- Supporting young people to be independent in getting to and from work and being at work
- Supporting young people to develop life skills that are important in the workplace

TTE services assist to make links with Disability Employment Services to enable young people to make an easier transition to employment when they are ready.

Pre-vocational Programs

Pre-vocational programs assist young people to develop the confidence, skill and understanding of workplace expectations in order to gain employment. The programs may include accredited training focusing on particular industries, support to undertake work experience components, numeracy and literacy modules, and development of life skills. This includes communication, workplace requirements and job seeking assistance. Components of pre-vocational programs can be especially tailored to meet the specific pre-vocational training needs of the individual.

Volunteering

A volunteer is someone who works without getting paid. People usually choose volunteer work to:

- Contribute to the community
- Gain experience in a workplace setting
- Meet new people
- Learn new skills

For more information on volunteering options please visit the following websites:

- **Go Volunteering:** www.govolunteer.com.au
- **Volunteering Australia:** www.volunteeringaustralia.org
- **Volunteering Victoria:** www.volunteeringvictoria.org.au
www.volunteer.vic.gov.au
www.volunteer.infoxchange.net.au

Further Education and Training

TAFE

TAFE and University courses are an option for school leavers wishing to continue their studies. Attending TAFE and University open days is another way to find out about the courses offered.

For more information regarding the courses offered please visit the following websites:

- **Victorian Skills Pathway:** www.education.vic.gov.au/victorianskillsgateway/Pages/home.aspx
- **Further Education and Training:** www.education.vic.gov.au/training/Pages/default.aspx
- **Victorian Tertiary Admissions Centre (VTAC):** www.vtac.edu.au
- **Centre for Adult Education:** www.cae.edu.au

People who have a disability or special learning needs have the opportunity to complete two disability specific courses offered by some TAFEs. These courses are:

- **Certificate 1 in Transition Education:** This course is designed to enable students to use the opportunities provided with the course to plan their move into a preferred adult option. The aim of the course is to develop skills and enable the young person to:
 - Access further education and training (for e.g. Certificate 1 in Work Education)
 - Gain entry into employment or voluntary work
- **Certificate 1 in Work Education:** This course focuses primarily on preparing people for employment, further vocational or 'job specific' training.

For more information regarding TAFE courses contact TAFEs directly or the TAFE Course Line on 131 823.

Disability Liaison Officers (DLO)

At every TAFE and University there is a Disability Liaison Officer (DLO) who may be able to assist students with a disability who require support to complete a course. The support they can provide will depend on the disability and specific needs. This may include:

- Enrolment and campus orientation
- Academic support workers (i.e. note takers, interpreters, readers)
- Adaptive technology (i.e. voice activated software)
- Alternative format course materials (i.e. Braille, electronic)
- Liaison with lecturers/teachers
- Alternative arrangements for assessment (i.e. additional time, scribe, reader)
- Physical access to facilities
- Referral to other support services (i.e. counselling, health, housing, financial aid, learning skills unit)

For more information regarding the services offered by DLO's or about the TAFE or University you can contact the Disability Liaison Unit (DLU). This may also help with the decision about where you may want to study.

Some useful questions to ask a DLU include:

- How can you help me with my studies?
- Can you help me get the aids or equipment I need to study?
- Do I have to disclose my disability to the DLU, TAFE or University or my teachers?
- What other supports am I eligible for?
- Will I need to come to regular meetings or appointments?
- If you can't help me with something will you find someone who can?
- How long can you support me for?
- Can you provide me with any support after I finish my studies?
- Are there any extra costs involved?

If the young person has been accepted to a TAFE or University they should contact the DLU again to inform them that they will be studying there so they can arrange supports.

Neighbourhood Houses and Learning Centres

Neighbourhood Houses and Learning Centres are local organisations that provide a welcoming and supportive environment for people to explore social, educational and recreational activities. Some neighbourhood houses are Registered Training Organisations and can provide an environment for studying courses with a recognised qualification.

These environments can be helpful in finding work, meeting new people and making some new friends. Contact information can be found at the following website: www.anhlc.asn.au/

Apprenticeships and Traineeships

Apprenticeships and Traineeships are a combination of structured training with practical hands on experience. This gives a young person the knowledge and practical skills to pursue work choices.

Apprenticeships

Apprenticeships typically last three to four years and are normally offered in traditional trade industries such as; plumbing, building, carpentry, electrical, etc. Apprenticeships can be full-time or part-time and throughout the duration of the apprenticeship the individual will undertake training at a TAFE or other approved training provider. Once the young person has successfully completed an apprenticeship they will receive a nationally recognised qualification.

Traineeships

Traineeships typically last one or two years and are generally specific to non-trade occupations such as; hospitality, business administration, retail and information technology. Traineeships can be undertaken full-time or part-time and can be either on the job or off the job training, or a combination of both. On successful completion of a traineeship, the young person will receive a nationally recognised qualification.

The young person must have the ability to complete a Certificate II course in order to complete a traineeship. In some cases assessment can be modified for people with literacy and/or numeracy support needs.

For more information regarding apprenticeships and traineeships, please visit the following websites:

- **Australian Apprenticeships and Traineeships Information Service:** www.natinfo.com.au
- **Australian Government, Australian Apprenticeships:** www.australianapprenticeships.gov.au
- **Group Training Australia:** www.grouptraining.com.au

Disability Support Services and Individualised Programs

Day Support Services offer a variety of activities in a group based environment. These activities may be based on-site or in the community. Day Support Services aim to increase a person's independence and abilities, community participation and enhance their quality of life.

Individualised Programs offer a young person more tailored support which focuses on the young person's specific goals and interests, and involvement and participation in their local community.

Day Support Services and Individualised Programs can involve a range of learning and support opportunities that may include:

- Academic skills and independent living skills
- Accessing community resources
- Communication, socialising and relationships
- Pre-vocational training and experiences
- Volunteering
- Relaxation, sport, leisure and the arts

Once a service has commenced supporting a young person they are required to develop a Support Plan in consultation with the person and their support network. The plan outlines the young person's needs and aspirations and how the service provider will support them to work toward these.

Factors to consider when visiting a service

Service provider contact details are listed in this guide to enable you to enquire about a service or to arrange a visit. It is advisable to make an appointment before visiting so that someone is available to meet with you, show you around and answer questions.

Some things to consider are:

- What opportunities are there for programs to help the young person take part in activities offered in the community? What activities/programs are provided on-site?
- What are the start and finish times each day?
- How can the young person or their support network have a say in how the service is run?
- How can the service tailor opportunities to help the young person meet their goals? It is important that service providers know what you need and want. If an option is not currently on offer, the organisation may be able to expand their options; or broker or purchase services from another organisation.
- How does the service help young people to gain independence? How are achievements in independence tracked and monitored?
- What educational, vocational, recreational and social opportunities can be offered?
- If pre-vocational training is offered what outcomes have been achieved for participants?
- Does the service provider charge fees? What is the fee structure? What do the fees pay for and when will they need to be paid? The Futures for Young Adults program provides funding to the day service provider based on an assessment of each young person's support needs. The cost of any additional fees is the responsibility of the young person and / or their family.

Transport

Transport may be offered by some service providers at an additional cost. Funding is not provided for transport costs so please consider transport arrangements when deciding on a service. Some service providers have worked successfully to gradually build young people's ability to travel independently by public transport to and from the service. Please discuss transport options and related fees with service providers when you visit.

You may find the following questions helpful:

- Will I need to provide transport to and from the service? Will I be responsible for arranging, coordinating and paying for travel to and from the service?
- Is the service accessible to public transport? Does the service train people to travel safely to the service independently?
- What assistance can the service provide to assist with using public transport, private taxi or service-run transportation?
- If the service does offer transport between the service and a young person's home how much does it cost? Is the cost of the transportation covered by the mobility allowance?
- Are there any vacancies on the appropriate transport run? How long will it take to travel between home and the service?
- What sort of assistance is provided during and at each end of the journey?

Summary of Services in the Eastern Suburbs

Employment Services: Disability Employment Service Providers

ECHO Australia	14
Marriott Support Services	14
WISE Employment Ltd	15
Working Arrangements Pty Ltd - Dandenong	15
Working Arrangements Pty Ltd - Job Services Australia	16

Employment Services: Australian Disability Enterprise Providers

Ability Works Australia	17
easternOUTSOURCE	17
Knoxbrooke Inc – Yarraview Nursery	18
Marriott Support Services – Enviro	18
Marriott Support Services – Industries	19
Nadrasca	19
Oakleigh Centre Industries	20
Paramount Employment	20
Wallara Industries	20
Waverley Industries	21

TAFEs

Box Hill Institute of TAFE	22
Holmesglen Institute	22

Transition to Employment Providers

Connecting Skills Australia – Connect2Work	24
Marriott Support Services	24
Northern Support Services	25
The Bridge Inc	25
WISE Employment Ltd - Skills2Work	26

Prevocational Program Providers

Ability Tasmania Group Inc	27
Alkira – Individual Community Options	27
Alkira – Momentum and Pathways	28
Burke and Beyond – Bayswater	28
Burke and Beyond – The Next Step	29
Interchange Outer East	30
Kevin Heinze Garden Centre – Grow On	30
Knoxbrooke – Green Thumbs	31
LaTrobe Lifeskills	31

Marriott Support Services – Vocational Links	32
Nadrasca	32
The Onemda Association - LEAP	33
Yooralla – EDAR You Can	34
Disability Service Providers: Day Services and Individualised Programs	
Able Australia – Lifestyle Choices North	35
Alkira	35
Alpha Autism	36
Arts Project Australia	36
Autism Plus	37
Belgrave South Community House	37
Burke and Beyond – Blackburn South and Canterbury	38
Central Bayside Community Health Services	39
EACH – Individualised Service	40
EACH – Day Service	41
Inclusion Melbourne	42
Interchange Outer East – Balanced Options	42
Interchange Outer East – Individualised Service	43
Kevin Heinze Garden Centre – Grow Together	43
Knoxbrooke	44
Marriott Support Services	45
mecwacare	46
Melba Support Services	46
Monkami Centre	46
Muscular Dystrophy Association	47
Nadrasca	48
Northern Support Service	48
Oakleigh Centre	49
Scope – Syndal	49
Scope – Lilydale	50
Scope – Ringwood	50
Statewide Autistic Services Inc – Eastlynn	51
The Bridge – Day Service	51
The Bridge – Individualised Service	52
The Onemda Association	52
Villa Maria – Gateway Day Options	53
Wallara	53
Watch Disability Services	54
Wesley Mission Victoria	54
Your DNA	55
Yooralla – EDAR You Can	56

Yooralla – FirstBase	57
Yooralla – Mont Albert Day Service	58
Yooralla – Personalised Services	58
Council Services	
Boroondara City Council	59
Knox City Council	59
Manningham City Council	60
Maroondah City Council	60
Monash City Council	61
Yarra Ranges Council	61
Whitehorse City Council	62
Other Services	
Inclusion Melbourne	63
K.Y.M. (Victoria) Incorporated	64
Northern Support Service	64
Rec-Line	65
Voice and Movement Pty Ltd	65
Yooralla – EDAR Arts	66
Yooralla – EDAR College	66
Other Supports	
MetroAccess	67
Access for All Abilities	67
Companion Card	67
Carer Card	68
Home and Community Care	68
Travel Training Assistance	68
Travel Concessions	69
Respite Services	69
Federal Government Department of Human Services (formally Centrelink)	70

Employment Services: Disability Employment Services

ECHO Australia

Service Address	<ul style="list-style-type: none">• Box Hill (Head Office) - Level 3/2a Cambridge Street, BOX HILL, 3128• Oakleigh - 69-71 Atherton Road, OAKLEIGH, 3166• Dandenong - Shop 2, 12-14 Halpin Way, DANDENONG, 3175• Ringwood - 6/45-51 Ringwood Street, RINGWOOD, 3134• Wantirna South - 3/1a City Square, Knox Ozone, WANTIRNA SOUTH, 3152• Lilydale - C5/20-22 Castella Street, LILYDALE, 3140• Narre Warren - 6/418 Princes Highway, NARRE WARREN, 3805• Cranbourne - Shop 3/75-89 High Street, High Street Plaza, CRANBOURNE, 3977• Pakenham - 4/5 Cook Drive, PAKENHAM, 3810
Contact Person	Team Leader or Area Manager
Contact Telephone	Box Hill (Head Office) – (03) 9890 3088 Lilydale – (03) 9739 4455 Oakleigh – (03) 9569 7772 Narre Warren – (03) 8790 1621 Dandenong – (03) 9794 8801 Cranbourne – (03) 5990 0555 Ringwood – (03) 9879 7814 Pakenham – (03) 5940 3757 Wantirna South – (03) 9800 1870
Contact E-mail	echo@echoaustralia.com
Fax	9890 2871
Website	www.echoaustralia.com

Service Overview:

ECHO is a specialist employment service assisting students with a disability to make the transition to employment. ECHO consultants have specialist knowledge and expertise to assist you, in finding, obtaining and maintaining employment.

We provide assistance to set your employment goal, access training in specific job skills, Provide on-the-job support, Job search facilities, Job club, Resume assistance, Job search tips and advice.

Marriott Support Services

Program Name	Marriott Employment Options
Service Address	942 Nepean Highway, MOORABBIN, VIC, 3192
Contact Person	Samantha Pine
Position Title	Manager
Contact Telephone	(03) 9276 4300
Contact E-mail	samantha.pine@marriott.org.au
Fax	(03) 9555 9518
Website	www.marriott.org.au

Service Overview:

Marriott Employment Options are committed to supporting people who encounter barriers in finding employment. We specialise in assisting individuals with mental health issues, intellectual disability, autism and Aspergers to find long term employment in their community.

WISE Employment Ltd

Service Address Suite 3, Level 1, Box Hill Central (South Precinct)
1 Main Street, BOX HILL, VIC, 3128

Contact Person Ricardo D'Rozario

Position Title Business Manager

Contact Telephone (03) 8843 5003

Contact Mobile 0400 070 192

Contact E-mail boxhill@wiseemployment.com.au

Website www.wiseemployment.com.au

Service Overview:

WISE Employment empowers jobseekers to gain meaningful work.

WISE assists jobseekers and employers under the Australian Government's Disability Employment Services initiatives.

WISE works closely with government and community agencies, local industry and training organisations to achieve the best results for our jobseekers. We believe the entire community is enriched when everyone is supported to achieve their potential.

Each year, our passionate and skilled staff, help over 6,000 jobseekers in Victoria, New South Wales, Tasmania and the Northern Territory.

Working Arrangements Pty Ltd

Service Address 1/85 Foster Street, DANDENONG, VIC, 3175

Contact Person Brian Rohde

Position Title Site Manager

Contact Telephone (03) 9792 9957

Contact E-mail dandenong@workingarrangements.com.au

Fax (03) 9792 9961

Website www.workingarrangements.com.au

Service Overview:

Working Arrangements is a disability support certified employment service that assists people with a disability, medical condition or injury to secure safe and sustainable employment opportunities. We provide a whole range of employment services including careers counselling, resume preparation, application letters, interview skills training, access to suitable training courses, worksite assessments, worksite modifications and workplace training and support.

Working Arrangements Pty Ltd

Program Name	Job Services Australia
Service Address	Suite 2, 329 Main Street, LILYDALE, VIC, 3140
Contact Person	Brian Rohde
Position Title	Site Manager
Contact Telephone	(03) 9735 9366
Contact E-mail	jsa@workingarrangements.com.au
Fax	(03) 9739 5437
Website	www.workingarrangements.com.au

Service Overview:

Job Services Australia is dedicated to providing employment services tailored to the needs of individuals and helping unemployed people find suitable and sustainable jobs. Our service will include an individualised program with a centralised assessment process in which we assess key life areas, personal counselling, practical support, skill development and access to training and work experience, career planning, job seeking activities and post placement support.

Employment Services: Australian Disability Enterprises

Ability Works

Service Address	1 Yarra Blvd, Kew 3101
Contact Person	Tim Whiting or Shane Daniel
Position Title	Workplace Support
Contact Telephone	9853 7080
Contact E-mail	support@abilityworks.com.au
Fax	9853 9715
Website	www.abilityworks.com.au

Service Overview:

Working at Ability Works Australia is exciting and challenging. Ability Works Australia offers a range of employment opportunities for people with disabilities. Individuals have the opportunity to work in several different areas. These include working across manufacturing, packaging and logistics services areas.

When operating in these areas employees have a chance to use a range of machines and equipment, as well as using their manual skills to make an array of products.

Eastern Outsource

Program Name	Eastern Outsource
Service Address	21 Clancy Road, MOUNT EVELYN
Contact Person	Karen Vine-Reardon
Position Title	Office Administrator
Contact Telephone	9736 4984
Contact Mobile	0432 521 319
Contact E-mail	easternoutsouce@hotmail.com
Fax	9737 1303
Website	www.easternoutsource.com.au

Service Overview:

Packaging, gardening services, secure document shredding, production and sale of kindling, production and sales of rags.

Knoxbrooke Inc

Program Name	Yarraview Nursery
Service Address	136 York Road, MOUNT EVELYN, 3796
Contact Person	Karen Dettmann
Position Title	Disability Manager
Contact Telephone	(03) 9737 0400
Contact E-mail	karen@yvn.com.au
Fax	(03) 9737 1995
Website	www.yvn.com.au

Service Overview:

Yarraview Nursery provides supported employment in a commercial enterprise based on horticulture and gardens. The operations include a wholesale nursery growing a large range of plants; work crews in garden maintenance, lawn mowing and a retail nursery business open to the public.

Certificate I and II in Horticulture / Agriculture

Yarraview Nursery offers many opportunities for you to have a career in horticulture. Accredited education and training is available and offered through Knoxbrooke's Registered Training Organisation in all areas of horticulture.

Marriott Support Services

Program Name	Marriott Enviro Services
Service Address	15a / 56 Keys Road, CHELTENHAM, VIC, 3192
Contact Person	Trish Vivian
Position Title	Support Manager
Contact Telephone	(03) 9947 1121
Contact E-mail	trish.vivian@marriott.org.au
Fax	(03) 9555 0204
Website	www.marriott.org.au

Service Overview:

Marriott Enviro offer supported employment positions in a land care management service that include landscaping, grounds maintenance and cleaning.

Marriott Support Services

Program Name	Marriott Industries
Service Address	15a / 56 Keys Road, CHELTENHAM, VIC 3192
Contact Person	Trish Vivian
Position Title	Support Manager
Contact Telephone	(03) 9947 1121
Contact E-mail	trish.vivian@marriott.org.au
Fax	(03) 9555 0204
Website	www.marriott.org.au

Service Overview:

Marriott Industries offers supported employment opportunities in packaging, light assemble and warehousing in a modern factory environment, conveniently situated in a light industrial estate.

Nadrasca

Program Name	Australian Disability Enterprise
Service Address	52-62 Rooks Road, NUNAWADING, VIC, 3131
Contact Person	Laura Ubavin
Position Title	Manager Quality and Risk Management
Contact Telephone	(03) 9873 1111
Contact E-mail	lubavin@nadrasca.com.au
Fax	(03) 9873 2270
Website	www.nadrasca.com.au

Service Overview:

Nadrasca Industry has a wide range of employment opportunities in the following areas:

- Warehouse/Supply Chain
- Consumer Ready Services
- Commercial Printing

In order to work at Nadrasca Industry people must meet the following criteria:

- Have a disability and be eligible for Centrelink Endorsement
- Undergo a Police check
- Want to work and maintain permanent employment
- Be able to travel independently to and from work

Recruitment Process:

1. Make an appointment, come in and have a tour of the premises.
2. Complete an Application Form and if applicable, be placed on the waiting list if suitable.
3. Take part in an assessment program, which consists of successfully completing a 3-month work trial.
4. During the work trial, assessment is focussed on work ethics, skills and productivity (There is a minimum standard of work skills and productivity expected).
5. After completing the 3-month work trial, feedback will be given to the person on their suitability for permanent employment.

Oakleigh Centre Industries

Service Address 1088 Centre Road, OAKLEIGH SOUTH, 3167

Contact Person Lily Rodricks

Position Title Senior Employee Support Officer

Contact Telephone (03) 9575 4200

Contact E-mail lrodricks@oci.org.au

Fax (03) 9575 4244

Website www.oakleighcentre.org/oci.htm

Service Overview:

Marriott Industries offers supported employment opportunities in packaging, light assemble and warehousing in a modern factory environment, conveniently situated in a light industrial estate.

Paramount Employment

Program Name The Bridge Paramount Workforce

Service Address 95A Cheltenham Road, DANDENONG, VIC, 3175

Contact Person Sandra Vongsykeo

Position Title Service Manager

Contact Telephone (03) 9792 2662

Contact E-mail svongsykeo@optionsvic.org.au

Fax (03) 9792 0660

Website www.paramountemployment.com.au

Service Overview:

Paramount Workforce is a supported employment service that provides training and support for people with disabilities, who may be interested in employment and/or would like to build their experience and confidence to be able to work in the open labour market. The program is available for people between the age of 16 & 65. In recent years Paramount Workforce has also being the step in stone for students who will be graduating and wish to trial the employment arena in a supported environment.

Wallara

Program Name Wallara Industries

Service Address Unit 4, 102-128 Bridge Road, KEYSBOROUGH, 3173

Contact Person Daniel Hamilton

Position Title Production Manager

Contact Telephone 9798 1019

Contact Mobile 0409 211 841

Contact E-mail dhamilton@wallara.com.au

Fax 9793 6203

Website www.wallara.com.au

Service Overview:

Wallara Industries is a division of Wallara Australia, a not for profit Disability Support organisation set up almost fifty years ago. Wallara Industries provides employment and work place training for people with an intellectual or developmental disability. Today, Wallara Industries caters for a wide range of customers and operates in a vibrant and competitive commercial environment across many various industry sectors.

Waverley Industries Limited

Service Address	370-372 Ferntree Gully Road, NOTTING HILL	
Contact Person	Sharon Sorensen	Ryan Khew
Position Title	HR Officer	HR Manager
Contact Telephone	9544 7222	
Contact E-mail	sharon.sorensen@wavind.org	ryan.khew@wavind.org
Fax	9562 9479	
Website	www.wavind.org	

Service Overview:

Waverley Industries Limited is a 'not for profit' organisation that employs 180 people with disabilities at our Notting Hill site and 30 people with disabilities at our Hallam site. We provide meaningful work in a safe and happy environment and specialise in Packaging and Assembly, Manufacturing, Hospitality and Catering.

TAFEs

Box Hill Institute

Program Name	Certificate 1 in Work Education
Service Address	465 Elgar Road, BOX HILL
Contact Person	Pam Leopold
Position Title	Course Coordinator
Contact Telephone	9286 9129
Contact Mobile	p.leopold@bhtafe.edu.au
Contact E-mail	9286 9100
Website	www.boxhill.edu.au

Service Overview:

Certificate 1 in Work Education is a course designed to assist students with learning difficulties to develop work skills or prepare them for further vocational training or studies. The course runs for 1 or 2 years, depending on the needs of the student, and provides a fantastic opportunity to explore actual work in a variety of industries both on and off Campus. Electives such as hospitality, office, retail, warehousing, maintenance, horticulture, community services or an individually tailored stream offer experience and skill development across a broad range of areas. Small class sizes, flexible and diverse learning environments and the opportunity to explore work experience with the support of teachers assists with the development of greater confidence, self esteem and future success.

Holmesglen Institute

Program Name	Certificate I in Transition Education and Certificate I in Work Education		
Service Address	Community and Transitional Education Department Holmesglen Institute		
	Chadstone Campus Batesford Rd Chadstone VIC 3148	Moorabbin Campus 488 South Rd Moorabbin VIC 3189	Postal Address PO Box 42 Holmesglen VIC 3189
Contact Person	Chadstone: Jan Davis Moorabbin: Stuart Hunter		
Position Title	Course Coordinator		
Contact Phone	Chadstone: (03) 9564 1745 Moorabbin: (03) 9209 5686		
Contact E-mail	workeducation@holmesglen.edu.au or Chadstone: jan.davis@holmesglen.edu.au Moorabbin: stuart.hunter@holmesglen.edu		
Website	www.holmesglen.edu.au		

Service Overview:

Certificate I in Transition Education

The Community and Transitional Education Department at Holmesglen offers Certificate I in Transition Education to students who require additional support with their learning. The course can benefit students who:

- Are at least 16 years of age
- Have received learning support at school, or attended a specialist education setting
- Want to develop their social skills, independence and self confidence

Students are presented with the opportunity to engage in a range of learning activities that focus on: independent living, vocational and employability skills, personal development and community involvement.

Through project-based learning and explicit teaching methods, students gain vital skills in the areas of: workplace participation, social development and financial independence.

Certificate I in Transition Education is a full time course that is delivered in the classroom, in the community and in the workplace over 34 weeks.

Certificate I in Work Education

The Community and Transitional Education Department at Holmesglen offers Certificate I in Work Education to students who require additional support with their learning. The course can benefit students who:

- Are at least 16 years of age
- Have received learning support at school, or attended a specialist education setting
- Have completed VCAL (Foundation) or Certificate I in Transition Education
- Want to develop their vocational skills and explore pathways to work or further study

This vocationally focussed course provides learners with the skills to obtain and maintain employment. Through project-based learning and explicit teaching methods, students gain vital skills in the areas of: vocational and job seeking skills, employability and personal management skills, and teamwork and communication skills

Certificate I in Work Education is a full time course that is delivered in the classroom, in the community and in the workplace over 34 weeks.

All students are given the opportunity to study a dual qualification, achieving both a Certificate I in Work Education and one of the following:

- Certificate I in Agrifood Operations (Horticulture)
- Certificate I in Hospitality
- Certificate I in Retail Services

Transition to Employment Providers

Connecting Skills Australia

Program Name	Connect2work
Service Address	1 & 2 – 13 Chester St, OAKLEIGH
Contact Person	Jeff Don
Position Title	Transition to Employment (TTE) Manager
Contact Telephone	9784 3900
Contact Mobile	0417 381 350
Contact E-mail	jdon@csa.org.au
Website	www.csa.org.au

Service Overview:

Connect2work is a TTE program that provides individualised support to young school leavers. Clients gain valuable insight into developing work skills throughout industry training. In-house training supports all clients to learn valuable knowledge around workplace based literacy and numeracy, life skills, career identification, learn to drive, communication skills etc. The program is highly supportive and well structured with many successful links to employment outcomes. The program has established strong link with the local community through various organisations and is continually growing and developing.

Marriott Support Services

Program Name	Vocational Links
Service Address	15a / 56 Keys Road, CHELTENHAM, VIC 3192
Contact Person	Katrina Blake
Position Title	Team Leader
Contact Telephone	(03) 9555 0777
Contact E-mail	katrina.blake@marriott.org.au
Fax	(03) 9555 0204
Website	www.marriott.org.au

Service Overview:

The Vocational Links Program is designed to assist young people to plan ahead, set goals and make informed decisions about their future and the range of options they want to explore. It is based at our site at Keys Road, Cheltenham. This is a real workplace that supports two social enterprises, allowing the Vocational Links participants to understand a work environment and appreciate the rules and expectations that surround a commercial business. The Vocational Links Program is a three year course. The third year is Transition to Employment (TTE), a state funded initiative designed to provide assistance to young people interested in pursuing employment, but who are not yet ready to move into employment or receive assistance through a commonwealth employment program.

Northern Support Services

Program Name	Work Education & Training
Service Address	30 Union Street, NORTHCOTE, 3070
Contact Person	Jennifer Williams
Position Title	Operations Manager
Contact Telephone	9486 5077
Contact E-mail	jennifer.williams@nss.org.au
Fax	9486 5488
Website	www.nss.org.au

Service Overview:

Transition To Employment (TTE) provides support for people who want to pursue paid employment and who require additional training to achieve their goal.

Participants are supported to identify individual employment goals, develop the skills needed including personal development, and receive on the job work training.

TTE is highly individualised, and may include a mix of individual and group support, as well as a combination of Registered Training and Work Education and Training. This is determined in consultation with the participant and their identified employment goals.

Access to the service is offered on a full or part time basis.

The Bridge Inc

Service Address	Suite 1, 4 th Floor, 26 McCrae Street, DANDENONG
Contact Person	Nicole Armstrong
Position Title	Manager Pathways and Information
Contact Telephone	8710 8555
Contact E-mail	pathways@thebridgeinc.org.au
Fax	8710 8599
Website	www.thebridgeinc.org.au

Service Overview:

The Bridge offers a program to support people who are interested in seeking employment but are not yet ready to move into work.

The program can support you to:

- make informed decisions about your employment options
- develop work-related skills
- Explore your career options through work experience or volunteering.
- Build community based networks including recreation and friendships

WISE Employment Ltd

Program Name	Skills2Work
Service Address	Suite 3, Level 1 Box Hill Central (South Precinct), 1 Main Street, BOX HILL, VIC, 3128
Contact Person	Lily Kocoski
Position Title	Program Manager
Contact Telephone	(03) 8843 5001 or (03) 8843 5002
Contact Mobile	0409 520 338
Contact E-mail	skills2workboxhill@wiseemployment.com.au
Website	www.wiseemployment.com.au

Service Overview:

WISE Employment's 'Skills2Work' program is a 'Futures for Young Adults' (FFYA) and 'Transition to Employment' (TTE) program, funded by the Victorian Government.

'Skills2Work' supports young adults, 18 to 21, with disabilities to transition to post-school employment and/or further study options.

Core streams underpinning the program are; Language, Literacy & Numeracy, Life and Vocational skills.

Participants also develop work readiness skills through work experience, volunteer work and industry visits.

Prevocational Program Providers

Ability Tasmania Group Inc

Program Name	Ability Pathways to Independence
Service Address	Suite 15, Level 1, 270 Blackburn Rd, GLEN WAVERLEY
Contact Person	Evan Brett
Position Title	Operations Manager
Contact Telephone	6432 3448
Contact Mobile	0419 008 446
Contact E-mail	evan.brett@abilityemployment.com.au
Website	www.abilityemployment.com.au

Service Overview:

Ability Pathways to Independence is a post school transition to employment program that works to prepare young people with a disability for paid open employment opportunities. Pathways to Independence provides community based and individually tailored work experience opportunities with the view of obtaining future employment.

Alkira

Program Name	Individual Community Options
Service Address	3 Thurston St, BOX HILL, 3128
Contact Person	Lisa Sawatzky
Position Title	Manager
Contact Telephone	9890 1365
Contact E-mail	l.sawatzky@alkira.org.au
Website	www.alkira.org.au

Service Overview:

The team at Individual Community Options (ICO) will help you to secure work activities, provide on the job training, work place modifications and employer mentoring. The goal is to have you successful and sustainable in your workplace. Ongoing support and co-ordination is available using your funding. The type of work you will experience depends on your interests and aspirations. Your working opportunities may include voluntary work, work experience or paid employment.

People who chose Individual Community Options (ICO) are eligible to access additional Alkira services including:

- **Recreation**– a wide range of fun activities and events on weeknights, weekends and holidays during the year.
- **Respite** – group based short term and emergency accommodation.
- **Planning**–links the important people in your life, the paid and unpaid supports, and gets everyone working together to assist you to achieve your goals. The planning process also helps you with information and advice along the way.

Alkira

Program Name	Momentum and Pathways
Service Address	43 Carrington Road, BOX HILL, 3128
Contact Person	Lisa Sawatzky
Position Title	Manager
Contact Telephone	9890 1365
Contact E-mail	l.sawatzky@alkira.org.au
Website	www.alkira.org.au

Service Overview:

Momentum is a 3 year post school course providing a mix of accredited and non-accredited subjects for people aged 18-25 who are looking to consolidate and continue their learning in a professional workplace. The Momentum curriculum has been developed to assist people in accessing a range of pathways for their future. TAFE certificate courses, vocational options, further education and training or voluntary work in the community are available to Momentum participants.

Pathways is a post graduate 2 year extension program that is available for those wishing to build on their academic learning and practical application of skills in the workplace. This two year extension program has a focus on increased independence, responsibility and works skills development.

People who chose Momentum and Pathways are eligible to access additional Alkira services including:

- **Transport** – to and from your home and Alkira meeting site morning and afternoon. Access to this service depends on seat availability, your residential address and level of travel ability.
- **Individual Community Options** – tailored supports to assist you to participate in work experience, voluntary work, paid employment, independent living and recreation activities.
- **Recreation** – a wide range of fun activities and events on weeknights, weekends and holidays during the year.
- **Respite** – group based short term and emergency accommodation.
- **Planning** – links the important people in your life, the paid and unpaid supports, and gets everyone working together to assist you to achieve your goals. The planning process also helps you with information and advice along the way.

Momentum is located within a safe walking distance from Box Hill Station, 109 Tram Stop and the Box Hill Bus Terminal. We support travel training and public transport use.

Burke and Beyond

Program Name	Burke & Beyond - Bayswater
Service Address	17 Macauley Place, BAYSWATER
Contact Person	Denise Shaw
Position Title	Service Coordinator
Contact Telephone	9720 3921
Contact E-mail	denises@burkeandbeyond.org.au
Website	www.burkeandbeyond.org.au

Service Overview:

Bayswater is a new program focusing on young adults aged in their twenties and early thirties. The focus is on young adults to extend their learning in a supported environment. Burke & Beyond – Bayswater's aim is to support people to become independent in their community, develop social skills, providing practical money and budgeting, problem solving, preparation for work readiness whilst building self esteem. Burke and Beyond will provide opportunities to try new activities and challenge participants to expand their learning and development.

Burke and Beyond

Program Name	The Next Step
Service Address	14-16 Blackburn Road, BLACKBURN
Contact Person	Denise Shaw
Position Title	Service Coordinator
Contact Telephone	9877 4470
Contact E-mail	denises@burkeandbeyond.org.au
Fax	9877 4498
Website	www.burkeandbeyond.org.au

Service Overview:

The Next Step has been specifically set up as a transition program for young people finishing school and are looking to develop into the next stage of their lives.

Our experienced staff members offer a friendly and safe environment for everyone. The support will be developed in collaboration with people who are important in our participant's lives and will be based on their needs. We believe that everyone needs to feel included in their community. We work not only with our participants but also with local businesses and community groups in developing opportunities for training and social interaction.

We use a Person Centred Planning approach with each individual and our focus is to maintain and develop skills, support people through their recreational or pre vocational activities and encourage the development of new relationships with their peers and others in the community with the ultimate aim of embedding the knowledge and skills within the individual so they can make choices for the future that best suit their needs.

We know from experience that young people need to gain some life experience and get the opportunities to try different options before they develop an idea of what they want to do as adults. The Next Step will assist participants in clarifying what viable options are out there.

The Next Step has moved to a larger location in the heart of Blackburn, is wheelchair accessible and a 2 minute walk from the Blackburn train station.

Interchange Outer East

Program Name	Balanced Options
Service Address	5-7 Yose Street, FERNTREE GULLY
Contact Person	Ellen Clacy
Position Title	Team Leader
Contact Telephone	9758 5522
Contact E-mail	ellen.clacy@ioe.org.au
Fax	9758 5899
Website	www.ioe.org.au

Service Overview:

Balanced Options works with school leavers and their families to provide experiences typical of young adults leaving school such as work. We have 5 service sites with dedicated site's, in Lilydale and Ferntree Gully for 18-24 year old adults.

At our 'Enterprises' site in Ferntree Gully we provide pre vocational training through a range of small enterprises such as garden maintenance, mulch collection and delivery and a firewood business. Participants also have the option of spending part of their week at another site to pursue other interests such as music, volunteer roles, relationship building and independence.

Coupled with the Futures program families can apply for after work social activities and Adult Recreation weekend options run by Interchange Outer East.

Kevin Heinze - Grow (formally Kevin Heinze Garden Centre)

Program Name	Grow On
Service Address	39 Wetherby Road, DONCASTER, 3108
Contact Person	Amanda Marshall
Position Title	Manager
Contact Telephone	9848 3695
Contact Mobile	0488 044 942
Contact E-mail	khgc@unite.com.au
Website	www.kevinheinzegardencentre.com

Service Overview:

The Kevin Heinze Centre assists young people to make successful and positive transitions into employment. Our national award winning program is deliberately small so we can offer the best individualised service to a limited number of applicants each year. Our trainers are tertiary trained, experienced, friendly and supportive. We not only provide young people with work skills, we also provide personalised social and emotional support to ensure long term success. We undertake nationally accredited courses through our established relationship with Knoxbrooke Inc. Our focus is to provide the best possible outcome for every young person.

Our Occupational Therapist, teachers and youth worker are available to assist young people to adjust to the requirements of work and improve personal and life skills (at no additional cost).

Limited places available. The Kevin Heinze Centre welcomes visitors.
Fees are set at FFYA levels and there are no additional fees.

Knoxbrooke Inc

Program Name	Green Thumbs / Registered Training Organisation (RTO)
Service Address	136 York Road, MOUNT EVELYN, 3796
Contact Person	Rick Jamieson
Position Title	Manager Education & Training Services
Contact Telephone	(03) 9737 0400
Contact Mobile	0400 072 889
Contact E-mail	rick@yvn.com.au
Fax	(03) 9737 1995
Website	www.yvn.com.au

Service Overview:

Nationally accredited training in Certificate Levels I & II in Horticulture / Agriculture and Certificate I in Vocational Preparation which includes vocational numeracy & literacy.

Horticulture / Agriculture certificates are delivered at Mt Evelyn in a fully operational commercial nursery to provide a real working environment. Pre Vocational education includes industry work experience placement.

La Trobe Lifeskills

Service Address	Lifeskills Centre, La Trobe University, BUNDOORA, VIC, 3086
Contact Person	Pauline Johnston
Position Title	Manager Lifeskills Training Division
Contact Telephone	9479 1474
Contact Mobile	0425 451 474
Contact E-mail	p.johnston@latrobe.edu.au

Service Overview:

A program for people with an intellectual disability covering a range of independent living skills, health & well being, art and recreation, transition to employment programs.

Marriott Support Services

Program Name	Vocational Links
Service Address	15a / 56 Keys Road, CHELTENHAM, VIC 3192
Contact Person	Katrina Blake
Position Title	Team Leader
Contact Telephone	(03) 9555 0777
Contact E-mail	katrina.blake@marriott.org.au
Fax	(03) 9555 0204
Website	www.marriott.org.au

Service Overview:

The Vocational Links Program is designed to assist young people to plan ahead, set goals and make informed decisions about their future and the range of options they want to explore. It is based at our site at Keys Road, Cheltenham. This is a real workplace that supports two social enterprises, allowing the Vocational Links participants to understand a work environment and appreciate the rules and expectations that surround a commercial business. The Vocational Links Program is a three year course. The third year is Transition to Employment (TTE), a state funded initiative designed to provide assistance to young people interested in pursuing employment, but who are not yet ready to move into employment or receive assistance through a commonwealth employment program.

Nadrasca

Program Name	My Life, My Future
Service Address	52-62 Rooks Road, NUNAWADING, VIC, 3131 5 Wood Street, NUNAWADING, VIC, 3131
Contact Person	Laura Ubavin
Position Title	Manager Quality and Risk Management
Contact Telephone	(03) 9873 1111
Contact E-mail	lubavin@nadrasca.com.au
Website	www.nadrasca.com.au

Service Overview:

My Life, My Future supports young people to gain the best possible life outcomes by providing an opportunity for young people leaving school to:

- Continue learning and to develop a vision for their future
- Identify further opportunities for growth and development through life experiences
- Have valued roles such as employment, volunteering and contributing in their community
- Access to further education and training (including Accredited Training)
- Gain further knowledge in life skills
- Gain work experience which could lead to employment.

The Onemda Association

Program Name	LEAP
Service Address	Ted Ajani Community Hub 3/284 Thompsons Road, LOWER TEMPLESTOWE
Contact Person	Brooke Andrews
Position Title	Service Provision Manager
Contact Telephone	9842 1955
Contact E-mail	brookea@onemda.com.au
Fax:	9842 3756
Website	www.onemda.com.au

Service Overview:

The Onemda Leap Program has been designed for people with intellectual disabilities who are seeking opportunities for further education, employment, and participation in the community.

The Leap program offers a range of accredited and pre-accredited courses to assist individuals in work education. These include

- Certificate 1 in Work Education
- Ready for Work
- Literacy & Numeracy
- Personal Development

The program also focuses on developing individual's skills in areas necessary for developing further independence, such as

- Cooking
- Budgeting and Shopping
- Independent Living Skills
- Social Skills Development
- Individualised Travel Training

The Leap program also provides opportunities for active participation in the community through;

- Pursuit of Volunteer opportunities
 - Experiencing a range of work experience opportunities
- Opportunity to be vocal and valued members of the community.

Yooralla

Program Name	EDAR You Can
Service Address	Community locations in Balwyn & Kew Main bases are currently: <ul style="list-style-type: none">• 100 Rochester Road, BAWLYN• 3/1401 Burke Road, KEW• Cherry Road, BALWYN
Contact Person	Jessica Silver
Position Title	Acting Service Manager
Contact Telephone	9857 0289
Contact E-mail	jessica.silver@yooralla.com.au
Website	www.yooralla.com.au

Service Overview:

EDAR You Can will resource and support you to:

- Make the choices you desire for your life and plan for these;
- Provide effective learning opportunities to promote your skill and independence (some examples include: skills for community living, volunteering, forming friendships and gaining and keeping a job);
- Support your integration into the community;
- Support you to navigate and manage transportation;
- Build your personal communication - using your preferred methods;
- Support you to get and use the key information you need to manage your life.

How this will work practically will depend on your own needs, desires and choices. Often people join clusters with others who have made similar or compatible choices so we can best support you with your choices in a group setting.

These clusters are based at a number of different locations in the Balwyn and Kew area. The addresses above are current but will be revised during 2014 as we become more community based.

As part of EDAR You Can people can choose to enrol and be supported in courses offered by EDAR College, or EDAR Art workshops.

Disability Service Providers: Day Services and Individualised Programs

Able Australia

Program Name	Able Lifestyle Choices North
Service Address	856 High Street, RESERVOIR, VIC, 3073
Contact Person	Tony Bailey
Position Title	Team Leader
Contact Telephone	9478 1455
Contact E-mail	able.north@ableaustralia.org.au
Fax	9478 7384
Website	www.ableaustralia.org.au

Service Overview:

Able North provides support for people with disabilities, 18 years and over. We provide community based programs, as well as in house skill building and fun activities. The program is available Monday to Friday; 9am to 3pm. Our service has highly trained staff, who are committed to providing individualised care to everyone attending.

Alkira

Program Name	Alkira
Service Address	3 Thurston St, BOX HILL, 3150
Contact Person	Lisa Sawatzky
Position Title	Manager
Contact Telephone	9890 1365
Contact E-mail	l.sawatzky@alkira.org.au
Website	www.alkira.org.au

Service Overview:

You have the choice to take part in programs and activities with a friend, in a group or on an individual basis. As your skills developed and depending on your needs, interests and wishes you may also be supported to attend accredited courses. You have the opportunity to apply your skills in practical situations and your everyday life.

Your planning process will help you identify fun, social, academic or recreational activities to develop your skills, social connections, confidence and independence.

People who choose Alkira are eligible to access additional services including:

- **Transport** – to and from your home and Alkira meeting site morning and afternoon. Access to this service depends on seat availability, your residential address and level of travel ability.
- **Individual Community Options** – tailored supports to assist you to participate in work experience, voluntary work, paid employment, independent living and recreation activities.
- **Recreation** – a wide range of fun activities and events on weeknights, weekends and holidays during the year.
- **Respite** – group based short term and emergency accommodation.
- **Planning** – links the important people in your life, the paid and unpaid supports, and gets everyone working together to assist you to achieve your goals. The planning process also helps you with information and advice along the way.

Momentum is located within a safe walking distance from Box Hill Station, 109 Tram Stop and the Box Hill Bus Terminal. We support travel training and public transport use.

Alpha Autism Inc

- Service Address**
- 60 Rosala Avenue, ALTONA NORTH, 3025
 - Chelsea Heights Community Centre, 160 Thames Promenade, CHELSEA HEIGHTS, 3196
 - Longbeach Place Community Centre, 15 Chelsea Road, CHELSEA, 3196
 - 201 Old Dandenong Road, HEATHERTON, 3202
 - Oakgrove Community Centre, 89-101 Oakgrove Drive, NARRE WARREN SOUTH, 3805 (Outreach Service)
 - Union Street, NORTHCOTE, 3070
 - Betty Day Community Centre, 67 Argyle Street, ST KILDA, 3182 (Outreach Service)

Contact Person Rhys McAskill

Position Title Manager Stakeholder Relations and Service Planning

Contact Telephone (03) 8808 6508

Contact E-mail rhysm@alphaautism.org.au

Website www.alphaautism.org.au

Service Overview:

Services including; communication, behaviour change, social & independent living skills, community participation & recreation and leisure activities for adults with autism. Sensory and communication skill programs are offered as well as computers skills and art therapy.

Arts Project Australia

Service Address 24 High Street, Northcote 3070

Contact Person James McDonald

Position Title Studio Manager

Contact Telephone 9482 4484

Contact E-mail james.mcdonald@artsproject.org.au

Fax 9482 1852

Website www.artsproject.org.au

Service Overview:

Arts Project Australia is a centre of excellence that supports artists with intellectual disabilities, promoting their work and advocating for their inclusion within contemporary art practice. Sessions operate six days per week and are open to any interested person with an intellectual disability. The only criterion for people attending is that they choose to do so and the program readily accommodates a diverse range of skills and abilities. There is a minimum attendance requirement of one full day (9.30am – 3.00pm).

Here art is not 'taught'. Instead, people are encouraged to find their own artistic voice and to pursue themes of personal interest and meaning. The aim of the program is to assist individuals to become not only as independent as possible in their work, but to support them to reach a deep engagement with, and enjoyment of, the artistic process. Arts workers will offer encouragement, advice and assistance where necessary. Intervention is kept to a minimum and there is a strong respect for the autonomy of each artist and their work.

Work is carefully stored and evaluated before being either reserved for exhibition and archiving or returned to the artists. Arts Project Australia also has a beautiful on-site gallery, where we actively promote and market the work produced in the Arts Project studio to a wider audience. Arts Project artists have earned acclaim both in Australia and internationally, and artists also earn income from the sale of their artwork.

Arts Project Australia was the winner of the 2011 Melbourne Award for Contribution to Community.

Autism Plus

Program Name	Autism Plus Day options
Service Address	3 Meredith Street, MOUNT WAVERLEY
Contact Person	Sarah Curtis
Position Title	Coordinator
Contact Telephone	9773 6640 (Head Office)
Contact Mobile	0423 511 446
Contact E-mail	sarah@autismplus.com.au
Fax	9773 6643 (Head Office)
Website	www.autismplus.com.au

Service Overview:

Specialised individualised support, small group community based activities. Support staff have expertise in supporting people who require a service tailored to their individual needs.

Belgrave South Community House

Program Name	Extend
Service Address	10 Gilmore Court, BELGRAVE SOUTH
Contact Person	Graham Bergroth
Position Title	Disability Services Coordinator
Contact Telephone	(03) 9754 2274
Contact Mobile	0407 942 007
Contact E-mail	bsch-extend@netspace.net.au
Fax	(03) 9752 6363
Website	www.bsch.org.au

Service Overview:

Belgrave South Community House provides support in both a one participant to one staff member ratio and group support. The day service that operates throughout the week is called the 'Extend Program' and offers a variety of group based programs tailored to the goals of the individuals. These programs may operate on or off site.

The 'Weekend Extend Program' is the recreational group based camps and activities that operate on weekends. We also offer flexible one on one support, both in home and accessing the community.

Burke and Beyond

Program Name	Burke and Beyond Canterbury and Blackburn South
Service Address	<ul style="list-style-type: none">• 2 Kendall Street, CANTERBURY, 3126• Fulton Road, BLACKBURN SOUTH
Contact Person	Peter Ashmore
Position Title	Community Services Manager
Contact Telephone	9836 9973 or 9886 1111
Contact E-mail	petera@burkeandbeyond.org.au
Fax	9886 3411
Website	www.burkeandbeyond.org.au

Service Overview:

The Canterbury service has been providing support to our participants since 2000. We have focussed on developing good relationships with our neighbours and local merchants through programs such as the Community Garden and our Graffiti removal team. We take full advantage of our great location near the Canterbury Gardens and the train station and are continually looking at new ways to extend our participant's inclusion in all of the local community activities. This young and dynamic service has it all!

The Blackburn South service has been providing support to our participants since 1992. We focus on developing programs around the individual needs of our participants. The time table is flexible and reflects the variety of interests that people have.

We offer a range of activities including;

- Collingwood community farm
- Accessing local community venues
- Swimming
- Ladies and men's groups
- Sports
- Arts
- Choir
- Dog walking
- Cooking

We are always looking to develop new activities based on what the participant might like to do.

This is a nice small service, where we keep our numbers of participants below 30 so that we can support people the best we can. If you want a service where there is very good communication and a great attitude, this is the place.

Central Bayside Community Health Services

Program Name	Adult Community Options, day services
Service Address	335 Nepean Highway, PARKDALE and various locations within the City of Kingston and Sandringham.
Contact Person	Julie Torcasio
Position Title	Program Manager
Contact Telephone	8587 0250
Contact E-mail	jtorcasio@cbchs.org.au
Fax	8587 0293
Website	www.cbchs.org.au

Service Overview:

Adult Community Options provides day services to a broad range of students who are looking for post-school options.

CBACO offers programs to support a wide range of individuals. A Person Centred Plan is developed with each person. The plan outlines their interests, needs and wishes. To help each individual achieve their dreams and aspirations, CBACO develops, with the person, a weekly program. The timetable is based on their choice of activities and programs.

Examples of a weekly timetable of programs and activities may be:

- Work Skills
- Industry
- Physiotherapy
- Volunteering
- Communication
- Sensory Awareness
- Numeracy and Literacy
- Computers
- Swimming
- Hydrotherapy
- Sport Activity
- Travel Training
- Greek Group
- Cooking
- Art and Craft
- General Outings

As well as any other programs that may be identified by a client.

Central Bayside Community Health Services

Program Name	Adult Community Options, 1:1 Support Service
Service Address	335 Nepean Highway, PARKDALE
Contact Person	Julie Torcasio
Position Title	Program Manager
Contact Telephone	8587 0250
Contact E-mail	jtorcasio@cbchs.org.au
Fax	8587 0293
Website	www.cbchs.org.au

Service Overview:

CBACO can tailor a package of support for clients who wish to have 1:1 support to access the community of for support in the home.

Services are based on the individual needs, strengths and choices of clients. Our approach is self-directed.

EACH Social and Community Health

Program Name	eachChoice – Individualised service	
Service Address	Building 2 / 254 Canterbury Road, BAYSWATER, VIC, 3153	
Contact Person	Debbie Richards	Jane Ludtke
Position Title	eachChoice Managers	
Contact Telephone	Debbie: 8720 2752	Jane: 8720 2777
Contact Mobile	Debbie: 0419 501 298	Jane: 0400 526 776
Contact E-mail	d Richards@each.com.au	j Ludtke@each.com.au
Fax	9876 0100	
Website	www.each.com.au	

Service Overview:

eachChoice provides high quality services that promote independence, encourage choice and strengthen community participation.

eachChoice has staff who can support you to pursue your personal goals by:

- Providing individualised planning, co-ordination and case management
- Assisting with personal care and household tasks
- Supporting you to attend health appointments, school, work and other services
- Providing social and recreational support in your local community
- Empowering you to advocate for your own rights and needs
- Providing assistance to carers and family members with information, counselling and respite

Services available 24 hours a day, seven days a week.

EACH Social and Community Health

Program Name	eachChoice – Day Service	
Service Address	Building 2 / 254 Canterbury Road, Bayswater Victoria 3153	
Contact Person	Debbie Richards	Jane Ludtke
Position Title	eachChoice Managers	
Contact Telephone	Debbie: 8720 2752	Jane: 8720 2777
Contact Mobile	Debbie: 0419 501 298	Jane: 0400 526 776
Contact E-mail	drichards@each.com.au	jludtke@each.com.au
Fax	9876 0100	
Website	www.each.com.au	

Service Overview:

eachChoice provides high quality services that promote independence, encourage choice and strengthen community participation.

eachChoice has a day service and group activities that are provided in partnership with local community providers. The day service currently operates out of three local community hubs:

1. Chirnside Park Community Centre
2. The Basin Community Centre
3. Vermont Uniting Community Centre

We are also in the process of establishing a hub in Healesville.

Activities occur at the hub and around the hub to assist strengthen people's connection and participation, inclusion and citizenship in their local community.

Activities occur in small groups of 2 up to 7 individuals with support from the eachChoice staff and include:

- Fruit bowl, newspaper and egg delivery
- Gardening
- Art / Mosaic
- Woodwork / community woodwork projects
- Cooking
- Dancing
- Self Advocacy training
- Men's Hobby Group
- Swimming
- Computers
- Morning Melodies
- Pub Lunch

We also have a number of group activities for individuals with an acquired brain injury and these include:

- Woodwork
- Dinner with Friends
- Effective Communication Skills
- Music Studio
- Lawn Bowls
- The Jets – evening social group
- Computers
- Op Shop
- Digital stories
- Women's Wellbeing

Inclusion Melbourne

Program Name	Personalised supports – in your local community
Service Address	67 Sutherland Road Armadale
Contact Person	Carmine Laghi
Position Title	Manager – Personalised Support
Contact Telephone	(03) 9509 4266
Contact Mobile	0408 407 278
Contact E-mail	includeme@im.org.au
Fax	(03) 9576 0378
Website	www.inclusionmelbourne.org.au

Service Overview:

Inclusion Melbourne provides a truly personalised model of support that enables people with an intellectual disability to live, work, contribute and learn in their local community. Founded over 60 years ago, for the past 20 years we have focussed on delivering personalised supports. In 2008 we sold our centre to only deliver support to people in the community, enabling opportunities to form friendships, become included and welcomed in the local neighbourhood. Our work led to us being appointed as expert advisors on the design of the NDIS. We do not fit people into any existing schedule of centre-based group activities: we provide supports that are tailored to each person and that make sense specifically to them as an individual. Support is individually shaped around people's unique needs, preferences and interests. We take time to build relationships with people and through this trust we help you define and create the kind of life you want to live.

Interchange Outer East

Program Name	Balanced Options – Day Service
Service Address	5-7 Yose Street, Ferntree Gully
Contact Person	Ellen Clacy
Position Title	Team Leader
Contact Telephone	9758 5522
Contact E-mail	ellen.clacy@ioe.org.au
Fax	9758 5899
Website	www.ioe.org.au

Service Overview:

Balanced Options works with school leavers and their families to provide experiences typical of young adults leaving school. We have 5 service sites, with dedicated sites in Lilydale and Ferntree Gully for 18-24 year old adults. The Future's program aims to build self confidence, friendships, maintain and learn new skills, and independence through providing opportunities such as volunteering, external courses, health and fitness, work experience and fun. Intensive programs such as independent living, farm life and outdoor education are also available if enough people are interested. Coupled with the Futures program families can apply for after work social activities and Adult Recreation weekend options run by Interchange Outer East.

Interchange Outer East

Program Name	Balanced Options – Individualised Service
Service Address	5-7 Yose Street, FERNTREE GULLY
Contact Person	Ellen Clacy
Position Title	Team Leader
Contact Telephone	9758 5522
Contact E-mail	ellen.clacy@ioe.org.au
Fax	9758 5899
Website	www.ioe.org.au

Service Overview:

Balanced Options works with school leavers and their families to provide experiences typical of young adults leaving school. If being a part of a group based service is not for you, we can assist you to tailor your supports with an individualised service approach. You would be allocated a coordinator who will work with the family in creating choices and opportunities that also build self confidence, friendships, connections and independence. If you wish to share your ISP with a like minded person you get on well with and have similar interests with that also has an ISP, we can facilitate. Coupled with an individualised service, families can apply for after work social activities and Adult Recreation weekend options run by Interchange Outer East.

Kevin Heinze - Grow (formally Kevin Heinze Garden Centre)

Program Name	Grow Together
Service Address	39 Wetherby Road, DONCASTER
Contact Person	Amanda Marshall
Position Title	Manager
Contact Telephone	9848 3695
Contact E-mail	0488 044 942
Fax	khgc@unite.com.au
Website	www.kevinheinzegardencentre.com

Service Overview:

The Kevin Heinze Centre has provided positive and interesting programs for over 35 years. Our programs are deliberately small so we concentrate on providing the best individualised service to a limited number of applicants each year. Our staff are tertiary trained, experienced, friendly and supportive.

Adopting a holistic approach of developing the young person we provide personalised social, recreational and creative programs. Young people can also benefit from formal and informal preparation for becoming a resilient and more confident member of the community. Our focus is to provide the best possible outcome for every young person who comes to our service.

Our Occupational Therapist, teachers and youth worker are available to help improve personal and life skills (at no additional cost).

Limited full time and part time places are available annually. The Kevin Heinze Centre welcomes visitors.

Fees are set at FFYA levels and there are no additional fees.

Knoxbrooke Inc

Program Name	Knoxbrooke Day Program
Service Address	977 Burwood Highway, FERNTREE GULLY, 3156
Contact Person	Anne Langley
Position Title	Assistant Program Manager
Contact Telephone	(03) 9758 3666
Contact Mobile	0419 534 094
Contact E-mail	alangley@knoxbrooke.com.au
Fax	(03) 9752 3589
Website	www.knoxbrooke.com.au

Service Overview:

Knoxbrooke supports people in activities/programs at Knoxbrooke & in the community. Our individualised approach identifies what you want to do, the supports you require & enable you to reach your full potential. Some programs are subject to variation after review to ensure they remain engaging.

Knoxbrooke supports people in leisure, recreation & continuing education programs which include:

- Art/Craft
- Basketball
- Communication
- Community Participation
- Computers
- Cooking
- Drama
- Exercise
- Gardening
- Gym
- Independent Living Skills
- Literacy and Numeracy
- Music
- Relaxation
- Self-advocacy
- Sensory
- Swimming
- Ten-Pin Bowling
- Volunteering
- Woodwork
- Work Preparation Skills

You can attend 30hrs per week or less between 9.00am to 3.00pm. Fees apply & we will explain them.

A transport service is available to & from your home, depending on bus capacity, fees apply.

Self-directed approaches are also available upon request.

Marriott Support Services

Program Name	Marriott Community Services
Service Address	100 Wheatley Road, MCKINNON, VIC, 3204
Contact Person	Sarah Willisroft
Position Title	Coordinator
Contact Telephone	(03) 9578 7557
Contact E-mail	sarah.willisroft@marriott.org.au
Fax	(03) 9578 0778
Website	www.marriott.org.au

Service Overview:

Marriott House provides a bright, comfortable and supportive environment for people with a mild to moderate intellectual disability. Our focus is on enabling the individual's journey to identify, develop and attain their goals – large and small, within a professional and peer supported setting.

We endorse and practice a person centered approach. By placing individuals at the centre of our service we can provide opportunities for varied, valid and appropriate activities, events and supports that can benefit all of us.

Marriott House is well located in a suburban street with direct access to a large reserve and park. This location provides the benefits of a small, supportive local community close to the McKinnon Road strip of shops and with ready access to larger shopping precincts via the McKinnon train station (part of the Frankston line) and within walking distance to Centre Road and local bus services.

Marriott Support Services

Program Name	Roads to Independence
Service Address	942 Nepean Highway, MOORABBIN, VIC, 3189
Contact Person	Sarah Willisroft
Position Title	Coordinator
Contact Telephone	(03) 9578 7557
Contact E-mail	sarah.willisroft@marriott.org.au
Fax	(03) 9578 0778
Website	www.marriott.org.au

Service Overview:

Roads to Independence is part of Marriott Community Services and works in collaboration with adults with disabilities, their families and their community to promote opportunities for valued life outcomes for the individual.

We endorse and practice a person centered approach. By placing individuals at the centre of our service we can provide opportunities for varied, valid and appropriate activities, events and supports that can benefit all of us.

Roads to Independence helps people receive the assistance and support required to carry out everyday activities away from their own home environment. This program provides opportunities for the individual to learn and improve upon skills and hobbies, to socialize and travel in their local area, take part in leisure activities and be engaged in community based work.

mecwacare

Program Name	Day Service and FFYA
Service Address	57 Fisher St, MALVERN EAST, 3145
Contact Person	Linda Smart
Position Title	Manager
Contact Telephone	9572 9001
Contact E-mail	linda.smart@mecwacare.org.au
Fax	9572 9010
Website	www.mecwacare.org.au

Service Overview:

Services provided include training and support through individualised programs. We strive for community inclusion for our clients and recognise the differing interests and abilities for all people. The programs we offer encourage program choice, diversity and active participation and include skills building, education, vocation support, inclusion support and leisure activities.

Melba Support Services Inc.

Program Name	Community Connections
Service Address	<ul style="list-style-type: none">• Ormeau Road, MOUNT EVELYN• 55 Wray Crescent, MOUNT EVELYN
Contact Person	Sally Nicol
Position Title	Manager
Contact Telephone	97608202
Contact E-mail	sally.nicol@melbasupport.com.au
Fax	9736 2224
Website	www.melbasupport.com.au

Service Overview:

Community Connections operates from two sites in Mt Evelyn offering opportunities to people 18 years and over including FFYA. Community Connections focuses on assisting people to have valued and meaningful roles and responsibilities and participation in groups and activities in their local communities. These roles can be varied based on each person's interest's strengths and abilities.

Monkami Centre Inc.

Program Name	Monkami Day Services
Service Address	2-6 Dixon Ave, CROYDON, 3136
Contact Person	Clare Delf-Graham
Position Title	General Manager
Contact Telephone	(03) 9723 7751
Contact Mobile	0409436 296
Contact E-mail	cdgraham@monkami.org
Website	www.monkami.com

Service Overview:

Monkami Day Services provides a large variety of both on-site and off site programs that foster continual learning, social engagement and community inclusion; all of which focus on an individual's personal goals and continual skill development. Great emphasis is placed on ensuring school leavers continue their educational aspect of learning, combined with a wide range of additional social and community activities.

Muscular Dystrophy Association

Program Name	Day Program incorporating Futures for Young Adults (FFYA)
Service Address	111 Boundary Rd, NORTH MELBOURNE. 3051
Contact Person	Maria Kouppas
Position Title	Client Services Manager
Contact Telephone	(03) 9320 9555
Contact E-mail	Maria.Kouppas@mda.org.au
Fax	(03) 9320 9595
Website	www.MDA.org.au

Service Overview:

Activities undertaken at the MDA FFYA Program focus the individual and may extend to small group interactions. Each FFYA participant is encouraged to have active input into the development of the term program in the term prior to the next term. The purpose is to ensure that MDA be informed of the respective FFYA participant expectations and to map a method of achieving such. At the commencement of each calendar year a Client Activity Care Plan is developed, commenced, reviewed and updated each term to reflect any change in the FFYA participant's circumstance, interests and / or expectations.

Some recent examples of individual based activities are:

- Surfing the Internet
- Reading
- Art projects
- Music appreciation
- Undertaking research as part of a wider group project
- Cooking activities

Some recent examples of group activities include:

- Group outings to sporting events such as the cricket, football and greyhound racing
- presentations by visiting guests such as newspaper journalists, sport and TV personalities
- Weekly IT and/or Multimedia classes
- Weekly games of indoor wheelchair hockey
- Attending theatre performances and concerts

The program operates on the same schedule as the Victorian school calendar. (Operating on Tuesday, Wednesday, Thursday and Friday)The program is designed to ensure that full social interaction within the wider community is achieved.

Nadrasca

Program Name	My Life, My Future
Service Address	52-62 Rooks Road, NUNAWADING, VIC, 3131 5 Wood Street, NUNAWADING, VIC, 3131
Contact Person	Laura Ubavin
Position Title	Manager Quality and Risk Management
Contact Telephone	(03) 9873 1111
Contact E-mail	lubavin@nadrasca.com.au
Fax	www.nadrasca.com.au
Website	My Life, My Future

Service Overview:

My Life, My Future supports young people to gain the best possible life outcomes by providing an opportunity for young people leaving school to:

- Continue learning and to develop a vision for their future
- Identify further opportunities for growth and development through life experiences
- Have valued roles such as employment, volunteering and contributing in their community
- Access to further education and training (including Accredited Training)
- Gain further knowledge in life skills
- Gain work experience which could lead to employment.

Northern Support Services

Program Name	Community Education
Service Address	30 Union Street, NORTHCOTE
Contact Person	Jennifer Williams
Position Title	Operations Manager
Contact Telephone	9486 5077
Contact Mobile	0418 372 928
Contact E-mail	jennifer.williams@nss.org.au
Fax	9486 5488
Website	www.nss.org.au

Service Overview:

Northern Support Services (NSS) offers adult education and training specific to individual choice to increase independence and the ability of people to participate and be involved in the local community.

Activities including Travel & Mobility, Performance Arts, Visual Arts, Media Studies, Blog Creation, Photography, Health & Fitness, Cultural Awareness, Creative Writing, Computer Literacy, Advocacy, Personal Presentation, Recycling, Volunteering and Community Connections. Community Connections provides people with support to pursue non-group based self-directed choices that are tailored to personalised needs and aspirations.

Activities are delivered in local community venues and services including libraries, leisure centres, neighbourhood houses, public transport and local businesses.

Participation in any number of service combinations is available, including Work Education and Registered Training.

Access to the service is offered on a full or part time basis and can be delivered through group based support or individually through Community Connections.

Oakleigh Centre

Program Name	Connections
Service Address	773 Warrigal Road, OAKLEIGH
Contact Person	Anne Beard
Position Title	Executive Manager
Contact Telephone	9569 0603
Contact E-mail	abeard@oakleighcentre.org
Fax	9568 4238
Website	www.oakleighcentre.org

Service Overview:

Our aspiration at Connections is to assist each person to identify their dreams and goals and support them to work towards achieving these at their own level. It is important to us that each participant lives the sort of life they want with as much control over their own life as they can possibly have.

We assist people to participate in a wide range of activities based on their individual interests, goals and abilities. At Connections we offer a large range of activities, clubs, workshops and classes that take place both on site and within the community. It's your choice.

SCOPE

Program Name	Syndal Lifestyle Options
Service Address	272 – 274 Blackburn Rd, SYNDAL, 3150
Contact Person	Bev Cross
Position Title	Coordinator
Contact Telephone	9803 2950
Contact Mobile	0431 463 013
Contact E-mail	bcross@scopevic.org.au
Fax	9803 2995
Website	www.scopevic.org.au

Service Overview:

Scope provides a range of flexible services and activities to support people with a disability to live the life they want. At Syndal we provide a range of activities daily for people aged over 18. These activities are planned around the person's interests and are held at the service and out in the community.

SCOPE

Program Name	Lilydale Lifestyle Option
Service Address	70-72 Castella Street, LILYDALE, VIC 3140
Contact Person	Andrew Sims & Leanne Groen
Position Title	Coordinator & Team Leader
Contact Telephone	9739 7067
Contact Mobile	0439 003 847
Contact E-mail	asims@scopevic.org.au
Fax	9739 7063
Website	www.scopevic.org.au

Service Overview:

Lilydale Lifestyle Options is a centre for people with a disability to enjoy a full and varied array of life experiences in a safe and welcoming environment, we presently support over 20 people aging between 18 to 40 with complex needs to entre the with community access and in house learning programs.

Lilydale is developing another youth program focusing on community access and life transitions.

SCOPE

Program Name	Ringwood Lifestyle Options
Service Address	29 Pitt Street, RINGWOOD, VIC 3134
Contact Person	Ben Nuttall
Position Title	Co-ordinator
Contact Telephone	(03) 9870 4199 or (03) 9870 4988
Contact E-mail	bnuttall@scopevic.org.au
Website	www.scopevic.org.au

Service Overview:

Scope has adult day services located throughout Melbourne and regional Victoria. Each centre offers a variety of programs including living skills, education, leisure and recreation, arts and therapy. Programs are developed in conjunction with people to ensure we are offering the range of activities to meet people's interest.

Scope also operate programs funded through the FFYA Program through centres which provide:

- Individualised, youth focused programs based on identified needs and interests with a focus on connecting to community and trying new things.
- An opportunity for young people to continue school friendships or develop new friendships with other young people.
- Therapy support where required to assist with the physical and communication needs of each participant
- Regular communication with participants and their families through diaries, newsletters and meetings
- Attendant care of the highest standard for people who require assistance with personal needs

Scope has recently developed a range of service models to ensure the individual needs of people are fully catered for, this includes group based programs through existing day services or more tailored programs that can be accessed within the community, at home or in a range of other locations. While our day services operate during business hours, more flexible arrangements to suit individual needs can be provided.

Staff are trained in Person Centred Approaches and Planning and will offer support to people to develop plans that ensure we are able to support people to reach their potential and achieve their individual goals. Call us to arrange a tour of our sites or to discuss your individual needs.

Statewide Autistic Services Inc.

Program Name	Eastlynn
Service Address	2-4 Webster Ave, CROYDON
Contact Person	Kathie Gorman
Position Title	Program Manager
Contact Telephone	9723 0752
Contact Mobile	0404 834 756
Contact E-mail	Kathie.gorman@sasi.org.au
Fax	9724 9937
Website	www.sasi.org.au

Service Overview:

We provide day services in Croydon for people 18 years or over who are profoundly affected by autism or have other complex disabilities. Our clients have vastly different individual needs and often challenging behaviours which may hold them back from actively participating in the community.

Our main focus is assisting them to develop their skills in relation to:

- communication
- social interaction
- independent living

This is achieved through a diverse program of activities all designed to build confidence and encourage skill development in these areas.

We provide an environment which supports the development and empowerment of participants

Transport to and from the centre can be negotiated on an individual basis.

The Bridge

Program Name	The Bridge – Day Service
Service Address	<ul style="list-style-type: none">• Suite 1, 9 Clyde Road, BERWICK, VIC, 3806• 31-32 Douglas Street, NOBLE PARK, VIC, 3174• 49-51 Callander Road, NOBLE PARK, VIC, 3174• Suite 14, Level 1, 33-39 High Street, CRANBOURNE, VIC, 3977• 67-69 Webb Street, NARRE WARREN, VIC, 3805• Suite 1, Level 4, 26 McCrae Street, DANDENONG, VIC, 3175
Contact Person	Nicole Armstrong
Position Title	Manager Information and Pathways
Contact Telephone	8710 8555
Contact E-mail	pathways@thebridgeinc.org.au
Fax	8710 8599
Website	www.thebridgeinc.org.au

Service Overview:

The Bridge offers day services which enable individuals to participate in their community as fully as possible. Opportunities include skill development, education, sport and recreation, health and wellbeing, develop friendships, and much more.

The Bridge

Program Name	The Bridge – Individualised Service
Service Address	Suite 14, Level 1, 33-39 High Street, CRANBOURNE, VIC, 3977
Contact Person	Nicole Armstrong
Position Title	Manager Information and Pathways
Contact Telephone	8710 8555
Contact E-mail	pathways@thebridgeinc.org.au
Fax	8710 8599
Website	www.thebridgeinc.org.au

Service Overview:

The Bridge assists people to determine how they want to use their individual support package by supporting people to identify their goals and aspirations. We have a person centred approach that can help identify your goals and how you want to work towards achieving them. Supports are personalised to suit a wide range of needs and interests.

The Onemda Association

Program Name	Onemda
Service Address	123 Andersons Creek Road, DONCASTER EAST
Contact Person	Brooke Andrews
Position Title	Service Provision Manager
Contact Telephone	98421955
Contact E-mail	brookea@onemda.com.au
Fax:	98423756
Website	www.onemda.com.au

Service Overview:

Onemda provides support options to adults with intellectual disability on campus and in a variety of community venues. Onemda has a number of specialised programs and supports, with an emphasis on individual needs and interests, developing skills and enriching lives. These include:

- Education and Skill Development – a wide variety of programs which include literacy, numeracy, Independent Living, Art & Craft, Sport & Recreation, Cooking, Social Skills and Horticulture.
- Pathways – a collection of programs that work extensively with the person, their family and the community to develop the skills and confidence to pursue future life goals and options; including independent travel, and linking with employment providers and TAFE institutes.
- Lend a Hand – a prevocational service, where teams of volunteers provide valuable community service to elderly citizens with home help and gardening tasks.
- Performance Arts – music and drama workshops.
- Specialist needs – Qualified and experienced staff (including specialist services) deliver high quality professional care and support for people with complex needs in well resourced, modern facilities.

Villa Maria

Program Name	Gateway - Day Options
Service Address	<ul style="list-style-type: none">• Gate 5, 13 Fernhurst Grove, KEW, 3101• 35 -537 High Street Road, MOUNT WAVERLEY• 355 Stud Road, WANTIRNA
Contact Person	Rebecca Harbour
Position Title	Response and Assessment Co-ordinator
Contact Telephone	(03) 9855 7621
Contact Mobile	0407 742 425
Contact E-mail	rebecca.harbour@villamaria.com.au
Fax	(03) 9855 7898
Website	www.villamaria.com.au

Service Overview:

We provide opportunities for adults to broaden experiences, continue to develop education, maintain health and wellbeing, and community engagement. We provide opportunities that strengthen independence, communication, social and skill development. We work with individuals and their support networks to develop a well balanced plan. We provide a supportive transitional timetable in partnership with school's during the last term of the school year.

STEPS (Self directed, transitional, experiences, planning, support) offers opportunities and structured learning experiences to young adults leaving school. **STEPS** aim to broaden a person's experiences and strengthen their independence as they enter the adult world. This is a flexible service offering opportunities based on an individual's needs, interests, goals and aspirations.

Services can be delivered as:

- Activities in a setting with others
- Individualised options and activities tailored to the person
- A combination of both

An emphasis is placed on establishing a transition plan with the individual to support their entry into STEPS at Villa Maria Gateway.

A range of service hours are available including early morning, late afternoon and holiday periods.

Wallara

Service Address	Over 25 sites in the Dandenong/Frankston area
Contact Person	Michelle Smith
Position Title	General Manager
Contact Telephone	9792 2985
Contact Mobile	0448 393 331
Contact E-mail	msmith2@wallara.com.au
Fax	9793 3100
Website	www.wallara.com.au

Service Overview:

Wallara can cater to the needs of all people graduating from school. We have many sites that cater for different needs, including high support needs, behavioural support, communication support, support to find work, support to increase independent skills, support to learn about social skills. Wallara will individualise your plan so as you are working towards the goals for your future.

WATCH Disability Services

Program Name	WATCH - Mulgrave
Service Address	13 Mountain Cres MULGRAVE, VIC 3170
Contact Person	Bernadette Baillie
Position Title	CEO
Contact Telephone	9562 3796
Contact E-mail	bernie@watchinc.com.au
Fax	9562 3625
Website	www.watchinc.com.au

Service Overview:

WATCH supports adults with disabilities to gain skills and independence in their every day life by providing various programs and activities which are tailored to meet the individual's needs. After hours activities are also provided on a Friday evening and on Saturdays.

WATCH Disability Services

Program Name	WATCH - Springvale
Service Address	4A Brough St, SPRINGVALE
Contact Person	Bernadette Baillie
Position Title	CEO
Contact Telephone	9562 3796 or 9546 3700
Contact E-mail	bernie@watchinc.com.au
Fax	9562 3625
Website	www.watchinc.com.au

Service Overview:

WATCH Springvale Campus supports school leavers (FFYA) with a three year transition program for post-school options. Programs are individualized to meet the needs of the person's development.

Wesley Mission Victoria

Program Name	Connecting Communities – Eastern
Service Address	9 Civic Square, CROYDON
Contact Person	Adam Craig
Position Title	Acting Coordinator
Contact Telephone	9839 6100
Contact E-mail	adam.craig@wesley.org.au
Fax	9839 6199
Website	www.wesley.org.au

Service Overview:

Provide support for community based activities.

Your DNA

Program Name	Your DNA
Service Address	38 Charter Street, RINGWOOD
Contact Person	James Andrews
Position Title	Artistic Director
Contact Mobile	0407 878 983
Contact E-mail	james@yourdna.com.au
Website	www.yourdna.com.au

Service Overview:

Your DNA provides arts based activities for people considered to have physical and intellectual disabilities. We currently offer the following programs:

- Animation
- Animal Lovers
- Drama
- Short Film Making
- TV
- Musical Theatre (Song and Dance)
- Instrumental Music

We believe that everyone has a story and something to say. So we use arts-based programs to assist people in developing a wide variety of skills including: self-confidence, social awareness and integration, speaking clearly and being heard, understanding others, as well as the key skills relevant to each of the program areas.

Another key focus of all of our programs is community involvement. Past project collaborations include working with kindergarten students, primary and secondary school students, university performing arts and education students and local councils.

Come along for a visit and see what we do for yourself.

Yooralla

Program Name	EDAR You Can
Service Address	Community locations in Balwyn & Kew Main bases are currently: <ul style="list-style-type: none">• 100 Rochester Road, BAWLYN• 3/1401 Burke Road, KEW• Cherry Road, BALWYN• 51 Naroo Street, BALWYN• 3 Guildford Road, SURREY HILLS (High physical support needs)
Contact Person	Jessica Silver
Position Title	Acting Service Manager
Contact Telephone	9857 0289
Contact Email	jessica.silver@yooralla.com.au
Website	www.yooralla.com.au

Service Overview:

EDAR You Can will resource and support you to:

- Make the choices you desire for your life and plan for these;
- Provide effective learning opportunities to promote your skill and independence (some examples include: skills for community living, volunteering, forming friendships and gaining and keeping a job);
- Support your integration into the community;
- Support you to navigate and manage transportation;
- Build your personal communication - using your preferred methods;
- Support you to get and use the key information you need to manage your life.

How this will work practically will depend on your own needs, desires and choices. Often people join clusters with others who have made similar or compatible choices so we can best support you with your choices in a group setting.

These clusters are based at a number of different locations in the Balwyn and Kew area. The addresses above are current but will be revised during 2014 as we become more community based. The Surrey Hills service is purpose built for people with high physical support needs.

As part of EDAR You Can people can choose to enrol and be supported in courses offered by EDAR College, or EDAR Art workshops.

Yooralla

Program Name	First Base	
Service Address	77-79 Station Street FERNTREE GULLY, VIC, 3156	12 Rutland Road BOX HILL, VIC, 3128
Contact Person	Lynden McComb	June Sutton-Ryan
Position Title	Manager	
Contact Telephone	(03) 9752 3316	(03) 9897 4869
Contact Mobile	(03) 9752 3283	(03) 9899 4109
Contact E-mail	lynden.mccomb@yooralla.com.au	june.sutton-ryan@yooralla.com.au
Website	www.yooralla.com.au	

Service Overview:

Yooralla's Day Services provides a personalised approach to day activities by keeping our services small. Our experienced and skilled staff offer a safe environment for everyone. We believe everyone needs to feel included in their community. Person Centred Planning is our focus to ascertain what is important to the person. Activities are developed in collaboration with the person and the people who are important to them and reflect on the individual's goals and aspirations. We support people through their preferred activities, and encourage the development of relationships with their peers and others in the community.

FirstBase is designed and developed around the needs of young adults leaving school, aged 18 years and over with a disability, to make the transition to an adult lifestyle of their choice with the realisation of the individuals goals dreams and aspirations. FirstBase Day Services operate in a number of centres across Metropolitan Melbourne and South Gippsland.

FirstBase programs are designed in consultation with the people we work with and support and their parents/carers/significant others. A person centred approach is used to coordinate programs which support the person's goals and aspirations. Programs include living skills, education, information and technology, leisure and recreation, arts and therapy. These are offered in-house or within the community and in partnership with a range of community centres, neighbourhood houses, and community groups. FirstBase services are purpose built facilities with computer, multimedia, internet and new technologies rooms, general purpose areas and kitchen and meals areas. We offer close proximity and easy access to both public transport and community infrastructures.

Yooralla

Program Name	Mont Albert Day Service
Service Address	31 Strabane Avenue, MONT ALBERT NORTH, VIC, 3129
Contact Person	June Sutton-Ryan
Position Title	Manager
Contact Telephone	(03) 9899 3191
Contact Mobile	(03) 9899 3193
Contact E-mail	june.sutton-ryan@yooralla.com.au
Website	www.yooralla.com.au

Service Overview:

SteppinOut is a day program specialising in recreational and vocational activities for people 18 years and over with intellectual disabilities. Programs are designed in consultation with the people we work with and their parents/carers/significant others. A person centred approach is used to coordinate activities which support the person's goals and aspirations. Activities include; day trips, music therapy, art and craft and the developments of daily living skills.

Our community based SteppinOut facility located in Mont Albert North has been developed with general purpose areas, personal care facilities and a well-equipped kitchen and meals area. There is an extensive outdoor area to enjoy and both public transport and community resources are located nearby.

Yooralla

Program Name	Personalised Services
Service Address	6 Ellingworth Parade, BOX HILL, VIC, 3128
Contact Person	Lynden McComb
Position Title	Manager
Contact Telephone	(03) 9899 2766
Contact E-mail	lynden.mccomb@yooralla.com.au
Website	www.yooralla.com.au

Service Overview:

Personalised Services provides individually tailored supports to people with a disability. Our staff can work with you to identify opportunities and support you to achieve your goals.

This support is available either in the home or out in the community.

Our staff recognise that everyone is unique and we pride ourselves on our flexible and resourceful approach to achieving quality outcomes.

Council Services

Boroondara City Council

Program Name	Disability Services
Contact Person	Ageing and Disability Services Team
Contact Telephone	9278 4777 or 9278 4848 (TTY)
Contact E-mail	ageing.disabilityservices@boroondara.vic.gov.au
Website	http://www.boroondara.vic.gov.au/residents/ageing-disability/disability-services-info

Service Overview:

Please contact your Local Government for further information.

Program Name	MetroAccess
Contact Person	Metro Access Officer
Position Title	MetroAccess Community Development Officer
Contact Telephone	9278 4777 or 9278 4848 (TTY)
Contact E-mail	metroaccess@boroondara.vic.gov.au
Fax	9278 4748
Website	http://www.boroondara.vic.gov.au/residents/ageing-disability/disability-services-info

Service Overview:

Please contact your Local Government for further information.

Knox City Council

Program Name	Active Ageing & Disability Services Department
Contact Telephone	(03) 9298 8345
Contact E-mail	knoxcc@knox.vic.gov.au
Website	http://www.knox.vic.gov.au/Page/Page.aspx?Page_Id=136

Service Overview:

Please contact your Local Government for further information.

Program Name	MetroAccess
Contact Person	Peter Johnston
Position Title	MetroAccess Officer
Contact Telephone	9298 8819
Contact E-mail	peter.johnston@knox.vic.gov.au
Website	http://www.knox.vic.gov.au/Page/Page.aspx?Page_Id=211

Service Overview:

Please contact your Local Government for further information.

Manningham City Council

Program Name Disability Services
Contact Person Aged and Disability Support Service Intake Officer
Contact Telephone 9840 9700
Contact E-mail manningham@manningham.vic.gov.au
Website http://www.manningham.vic.gov.au/action/NOTEMPLATE?s=0,pURL=disability_services

Service Overview:

Please contact your Local Government for further information.

Program Name MetroAccess
Contact Person MetroAccess Community Development Officer
Contact Telephone 9840 9317
Contact E-mail socialcommunityservices@manningham.vic.gov.au
Website http://www.manningham.vic.gov.au/action/NOTEMPLATE?s=0,pURL=disability_services

Service Overview:

Please contact your Local Government for further information.

Maroondah City Council

Program Name Home and Community Care
Contact Person Intake Officer
Contact Telephone 9294 5729
Website <http://www.maroondah.vic.gov.au/HACC.aspx>

Service Overview:

Please contact your Local Government for further information.

Program Name MetroAccess
Position Title MetroAccess Coordinator
Contact Telephone 9294 5750
Contact E-mail maroondah@maroondah.vic.gov.au
Website <http://www.maroondah.vic.gov.au/MetroAccess.aspx>

Service Overview:

Please contact your Local Government for further information.

Monash City Council

Program Name Home and Community Care (HACC)
Contact Telephone 9518 3553
Contact E-mail intake@monash.vic.gov.au
Website <http://www.monash.vic.gov.au/community/community-care.htm>

Service Overview:
Please contact your Local Government for further information.

Program Name MetroAccess
Position Title MetroAccess Community Development Officer
Contact Telephone 9518 3637
Contact E-mail metroaccess@monash.vic.gov.au
Website www.monash.vic.gov.au

Service Overview:
Please contact your Local Government for further information.

Yarra Ranges Council

Program Name Aged and Disability Services Home and Community Care
Contact Person Intake Officer
Contact Telephone 1300 368 333
Contact E-mail intakeadministrator@yarraranges.vic.gov.au
Website www.yarraranges.vic.gov.au/Residents/Support_for_People_with_a_Disability

Service Overview:
Please contact your Local Government for further information.

Program Name MetroAccess
Contact Person Gary Kerridge
Position Title MetroAccess Officer
Contact Telephone 9294 6405
Contact E-mail g.kerridge@yarraranges.vic.gov.au or metroaccess@yarraranges.vic.gov.au
Website http://www.yarraranges.vic.gov.au/Residents/Support_for_People_with_a_Disability/Metro_Access

Service Overview:
Please contact your Local Government for further information.

Whitehorse City Council

Program Name Home and Community Care (HACC)

Contact Person Intake Officer

Contact Telephone 9262 6333

Website <http://www.whitehorse.vic.gov.au/Home-Personal-Respite-Care.html>

Service Overview:

Please contact your Local Government for further information.

Program Name MetroAccess

Position Title MetroAccess Development Officer

Contact Telephone 9262 6333

Website <http://www.whitehorse.vic.gov.au/MetroAccess.html>

Service Overview:

Please contact your Local Government for further information.

Other Services

Inclusion Melbourne

Program Name	Inclusion Training
Service Address	67 Sutherland Road, ARMADALE
Contact Person	Carmine Laghi
Position Title	Manager – Personalised Support
Contact Telephone	9509 4266
Contact Mobile	0408 407 278
Contact E-mail	includeme@im.org.au
Fax	9576 0378
Website	www.inclusionmelbourne.org.au/

Service Overview:

Inclusion Melbourne provides high quality education for learners at every level to develop skills for everyday living and further study. We offer the Certificate 1 courses in: Initial Adult Literacy and Numeracy; General Education; and Transition Education. All are accredited entry level adult education courses providing life-skills and preparation for further study. Most people attend 1 or 2 days per week around other activities.

All courses are modified for people with an intellectual disability and are delivered by a qualified teachers supported by a team of committed and trained volunteer tutors who work one-to-one with learners to provide support where needed. Classes are held in a purpose-built classroom in Malvern East and we expect to begin offering classes from additional locations during 2014. Learning with Inclusion Melbourne means people can:

- Learn at their own pace
- Study a curriculum which is tailored to individual learning needs
- Participate in a small class of up to 9 students

K.Y.M

Service Address	673 Mountain Highway, BAYSWATER
Contact Person	Michele Van Looy
Position Title	Training Manager
Contact Telephone	(03) 9722 5777
Contact Mobile	0432 477 530
Contact E-mail	mvanlooy@kym.com.au
Fax	(03) 9722 5700
Website	www.kym.com.au

Service Overview:

K.Y.M. offers a wide range of training programs for adults and youth, and actively involves participation of students with a disability within our training programs. K.Y.M. can tailor a training program to meet the needs of learners, working cooperatively with schools, TAFEs and other community organisations. Program such as Employment Step by Step, Get Going with Computers, Intro to First Aid, Intro to Retail, Intro to Hair and Beauty and Intro to Hospitality are some of the pre-accredited programs offered, as well as many accredited programs such as hairdressing, beauty, aged care, disability and youth work.

K.Y.M offer Certificate 1 in Work Education, Vocational Preparation and General Education for Adults.

Cost: Programs costs vary depending on funding eligibility or fee for service
Remember your training is tailed to the individual to allow the student to grow and participate in their community.

Northern Support Services

Program Name	Registered Training
Service Address	30 Union Street, NORTHCOTE, 3070
Contact Person	Jennifer Williams
Position Title	Operations Manager
Contact Telephone	9486 5077
Contact Mobile	0418 372 928
Contact E-mail	jennifer.williams@nss.org.au
Fax	9486 5488
Website	www.nss.org.au

Service Overview:

Northern Support Services is a Nationally Recognised Training Provider offering:

- Certificate 1 in Transition Education, and
- Certificate 1 in Work Education.

The curriculum for both courses is tailored to identify areas for further skill development and assist learners to gain the skills they need to move into adult roles within their community.

Courses are facilitated from various local community venues and support learning by utilising specialist community settings. Vocational and Workplace electives are carried out in relevant business settings.

Access to the service is offered on a full or part time basis, and any number of service combinations including Work Education and Community Education are available.

Rec-Line

Program Name Rec-Line Oakleigh Centre
Service Address 773 Warrigal Rd, OAKLEIGH, 3166
Contact Person Yvonne Skoda
Position Title Executive Manager Rec-Line
Contact Telephone 9564 0989
Contact Mobile 0403 24 25 28
Contact E-mail yskoda@aokleighcentre.org
Fax 9568 4238
Website www.oakleighcentre/recreation

Service Overview:

Rec-Line is a service offering individualised and group recreation and leisure options for adults with a disability. Service provision is offered on weekends, evenings, weekdays, and includes individualised planning and support to access community based interest groups or to assist the individual to join like-minded persons to achieve their goals and aspirations.

Voice and Movement Pty Ltd

Program Name Drama for Everyday Life Program
Service Address 34A Hamilton St, MONT ALBERT
Contact Person Angelica Rose
Position Title Principal
Contact Telephone 9890 0728
Contact E-mail info@voiceandmovement.com.au
Website www.voiceandmovement.com.au

Service Overview:

We deliver the Drama for Everyday Life Program, which assists students in developing social skills and self confidence. We cover such areas as making and maintain friendship, recognising non-verbal cues and Workplace Social Skills. The program is suitable for children, adolescents and adults with Asperger's Syndrome, high functioning autism and other mild difficulties with social skills.

Yooralla

Program Name	EDAR Arts
Service Address	100 Rochester Road, BALWYN
Contact Person	Melanie Cass
Position Title	Manager
Contact Mobile	0409 751 274
Contact E-mail	melanie.cass@yooalla.com.au
Website	www.yooralla.com.au

Service Overview:

A collective that uses art as a tool for social change and inclusion. Artists with a disability are empowered to work with others in the artistic community. We aim to build strong and diverse community connections.

Art workshops are available during week days as well as after hours. Workshops are open to all. People participating in EDAR Arts may also be interested in EDAR You Can and / or EDAR College. (See entries in Pre-vocational, Day Service and Other - College sections of this guide.)

Yooralla

Program Name	EDAR College
Service Address	3 / 1401 Burke Road, KEW EAST, 3102
Contact Person	Fiona Knowles
Position Title	College Manager
Contact Telephone	9857 0289
Contact E-mail	fiona.knowles@yooralla.com.au
Website	www.edarcollege.org.au/

Service Overview:

EDAR Group's Registered Training Organisation – providing tailored lifelong learning.

Pre-accredited training

- Basic Literacy
- Literacy – Intermediate
- Basic Numeracy
- Numeracy – Intermediate
- Computers – Basic Word and Internet
- Computers – Intermediate
- Volunteering
- iPad and apps for Communication

Accredited Training

- Certificate I in Transition Education
- Certificate I in Work Education

Small classes are taught by qualified tutors with support of additional staff. People can choose to enroll in EDAR College alone or alongside EDAR Life and / or EDAR Arts (please see day service and pre-vocational program entries).

Other Supports

MetroAccess

The objectives of MetroAccess include:

- To mobilise and support people with a disability to optimise participation in the life of their local community.
- To build and strengthen the community capacity to provide support to people with disability and their families.
- To facilitate integrated local community planning and co-ordination which engages and involve people with a disability and their families, disability service providers and community organisation.
- To work with disability support providers to enhance their capacity to provide relevant and appropriate supports in the community
- To improve access to information about relevant community activities and services available to people with a disability in their communities.

Access for All Abilities

Access for All Abilities works to provide inclusive sport and recreational opportunities to people of all abilities. Professionals work at a community level to provide this opportunity. Access for All Abilities can provide:

- A variety of ideas and contacts to get a person active and involved
- Links to organised activities at local facilities
- Advice on the latest sport and recreation opportunities in the local area
- Pathways to sport and recreation opportunities tight up to an elite level
- Opportunities to be trained and undertake roles to coach, umpire and volunteer.

Contact the local councils for more information regarding the opportunities available in those local areas. Further information can be found online at:

- **Access for All Abilities – First Point of Call Service:** www.aaavic.org.au
- **Department of Transport, Planning and Local Infrastructure – Access for All Abilities:** www.dpcd.vic.gov.au/sport/inclusive-sport/Access-For-All-Abilities

Companion Card

The Companion Card allows people with a disability who require attendant care for the rest of their lives to participate in community activities and events without discrimination.

Companion Cards can be presented at participating organisations where cardholders will not be required to pay an admission fee for their companion, who is providing attendant care.

Participating organisations will recognise all Companion Cards, which share common visual identity and security features.

For further information contact the Companion Card Information Line on 1800 650 611 or 1800 898 888 (TTY). Further information can be found online at: <http://www.companioncard.org.au/>

Carer Card

The Carer Card Program is a collaboration between the Victorian Government, businesses and the community to give recognition, understanding and support to Carers.

The program provides discounts and benefits for a wide range of businesses and local government and community organisations.

For further information contact:

Carer Card Program

GPO Box 4057

Melbourne, VIC 3001

Carer Card Information Line: 1800 901 958 (during business hours)

Email: carercard@dhs.vic.gov.au

Website: <http://carercard.vic.gov.au/home>

Home and Community Care

The Home and Community Care (HACC) Program provides a range of basic support services to frail older people and people with disabilities who are experiencing difficulties in managing daily tasks but who wish to continue living at home. The Program also supports their carers and families.

The HACC Program targets its services to those who have the greatest need for them and/or the greatest capacity to benefit from them. Agencies providing services will assess your needs and provide you with information about your choices. After assessment, agencies decide what services can be allocated to you. It is important to understand that in many places there are more people wanting services than there are services available. It is agencies' responsibility to make sure services are allocated fairly and on the basis of need.

HACC services are provided by local councils, community health centres and some community organisations including Aboriginal and ethno-specific organisations. Support can differ from one provider to another.

Further information can be found online at: <http://health.gov.au/hacc>

Travel training assistance

There are a number of services that may be able to provide support with travel training. This may assist a young person to get to the chosen post-school option, increasing independence. You can ask the service if they can provide this assistance.

Department of Human Services – Disability Client Services – Outreach Team

Contact your Transition Planner on 9843 6337 for further information.

Travellers Aid

Level 3, 225 Bourke Street, Melbourne

Phone: (03) 9654 2600

Email: info@travellersaid.org.au

Website: <http://www.travellersaid.org.au/>

Travel Concessions

Some young people are eligible for travel concessions.

Mobility Allowance (Centrelink)

Mobility Allowance assists people with a disability who are involved in qualifying activities and cannot use public transport without substantial assistance.

Further information can be found online at:

<http://www.humanservices.gov.au/customer/services/centrelink/mobility-allowance>

Victoria Multi-Purpose Taxi Program (Victorian Taxi Directorate - M40)

The Multi Purpose Taxi Program (MPTP) provides subsidised taxi fares for Victorians with severe and permanent disability who also experience financial hardship. The MPTP gives members subsidised taxi fares, paying up to \$60 per trip. Some members have a yearly limit. Passengers should not be charged a lifting fee.

Further information can be found online at: <http://www.taxi.vic.gov.au/passengers/mptp>

You can also contact the Victorian Taxi Directorate (VTD) on 1800 638 802 or TTY 1800 555 677.

Concession myki

There are several travel options available to people with a disability, which you may be eligible for when travelling on Victoria's public transport network.

Further information can be found online at:

- <http://ptv.vic.gov.au/tickets/concessions/>
- <http://ptv.vic.gov.au/tickets/free-travel-passes/access-travel-pass/>

Disability Parking Permit

A state-wide Disabled Persons' Parking Scheme currently operates in Victoria. Further information can be obtained through your Local Council.

Further information can be found online at:

<http://www.vicroads.vic.gov.au/Home/TrafficAndRoadConditions/ParkingAndClearways/DisabilityParkingScheme.htm>

Respite Services

Respite Information and Development in the East (RIDE)

Phone: 1300 886 798

ride@yooralla.com.au

<http://www.respiteeast.org.au/>

Commonwealth Respite & Carelink Centre

Phone: 1800 052 222

http://www9.health.gov.au/ccsd/usr_general/find_centre_01.cfm?section=centre

Yooralla – Breakaway Flexible Respite Program

Phone: 9831 5600

Email: breakaway.eastern@yooralla.com.au

http://www.yooralla.com.au/_data/assets/pdf_file/0018/15309/Breakaway-program-guidelines-2013.pdf

Federal Government Department of Human Services (previously Centrelink)

Some people with a disability are eligible to receive support through the Federal Government Department of Human Services (previously Centrelink).

Further information can be found online at:

<http://www.humanservices.gov.au/customer/themes/people-with-a-disability>

You can also contact the Federal Government Department of Human Services on 132 717.

Notes
